

COVID-19: Impact on Los Angeles Public Buildings and Infrastructure

ENGINEERING



CITY OF LOS ANGELES

BUREAU OF ENGINEERING

City of Los Angeles

Bureau of Engineering



Deborah Weintraub, AIA, LEEDAP
Chief Deputy City Engineer

City of Los Angeles

- Home to approx. 4 million people (latest estimate)
- Projected to increase to 4.3 million people by 2035
- City spans 469 square miles of land area (503 square miles total)
- Second most populous city in the country
- Approx. 9,000 miles of sidewalk
- Far-reaching City limits: Woodland Hills in the west, Sylmar in the north, Highland Park in the east, San Pedro in the south
- Host of the 2028 Summer Olympics



Who We Are – Bureau of Engineering

- About 950 employees (more than half are engineers, architects, and surveyors)
- Previous Year Operating Budget of \$146 million
- Over 500 current active projects totaling \$4 billion
- In the last year, Engineering hired 94 new employees / 45 percent women



What We Do – Bureau of Engineering

Plan, design, construct and project manage the City's Capital Improvement Projects for public buildings, open space, and infrastructure

Manage the City's permitting of all construction in the public right-of-way

Developed and manage City's state-of-the-art online mapping system, NavigateLA (official record keeper for the public right-of-way)



Cleanwater Infrastructure Program

July 2018 to June 2023

Will start design on about 100 projects totaling \$1.1 billion

Will start construction on about 240 projects totaling \$2.3 billion





Mobility Program

July 2018 to June 2023

Will start design on about 40 projects totaling \$97 million

Will start construction on about 120 projects totaling \$301 million



Public Buildings and Open Space Program

July 2018 to June 2023

Will start design on about 40 projects totaling \$620 million

Will start construction on about 120 projects totaling \$1.5 billion



Permits – Development Services

Last year, we served
more than 65,000 customers
at our four public counters



Current Major Projects

Homelessness Projects

Mayor Garcetti signed an Executive Order in May 2018 to create at least 15 Bridge Homes

Bureau of Engineering - Project Manager for design and construction

By July 2020 1,326 new beds will have been created at 17 sites across the City.



Current Major Projects

Homelessness Projects

RESTORED METAL SCREEN



LOUNGE AREAS:



SLEEPING AREAS:



Current Major Projects

Homelessness Projects



Current Major Projects

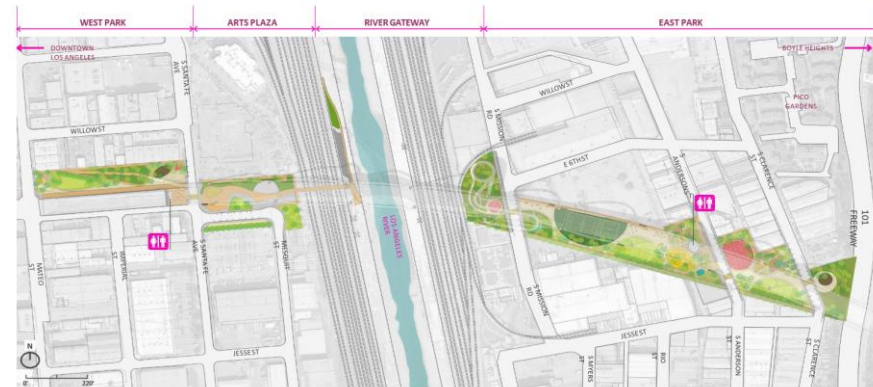
Sixth Street Viaduct Replacement Project



\$482 million Sixth Street Viaduct Replacement Project
Also, 12-acre park under viaduct

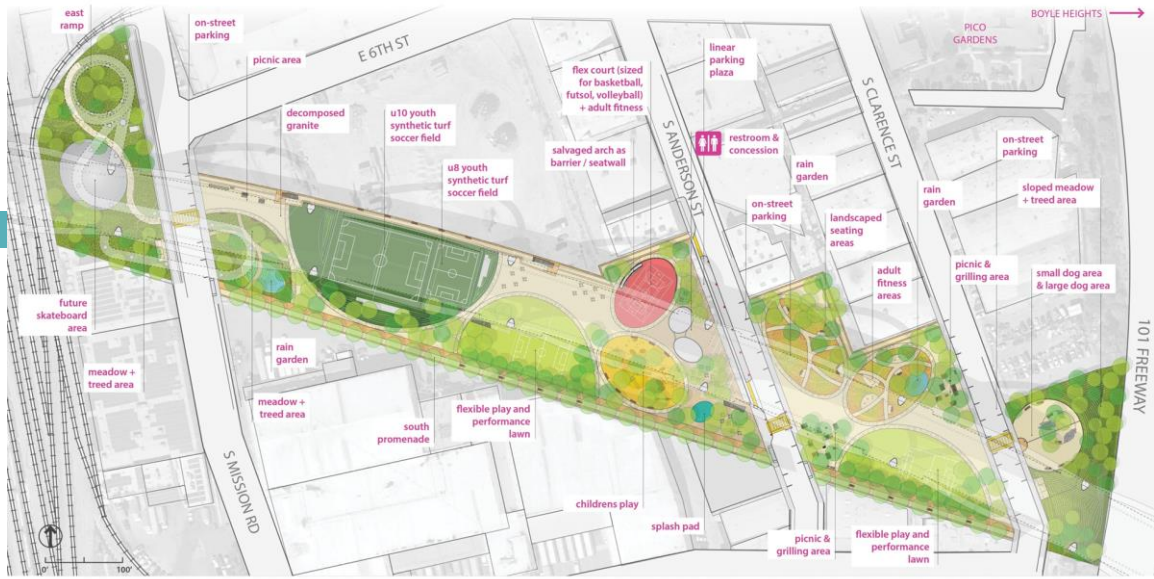


Canopy and Objects



Sixth Street Viaduct Replacement Project







Current Major Projects

Safe Sidewalks LA



Citywide Sidewalk Repair Program
\$31 million annually/ \$1.3 billion over 30 years

Alternative Materials Pilot Program

Current Major Projects

Complete Streets Program

Engineering is lead on Complete Streets Program

Design completed at two locations

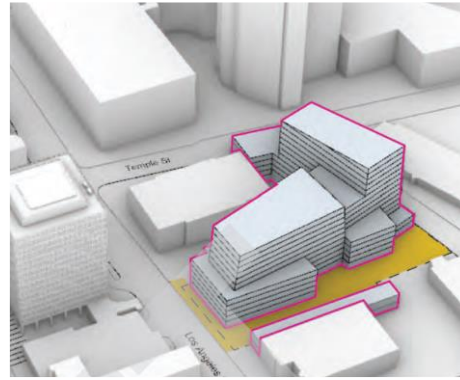
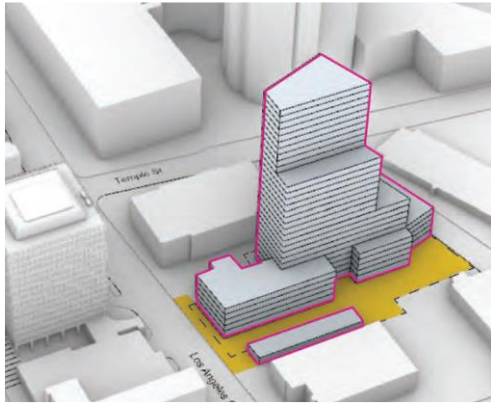
Multi-departmental program with LADOT, Street Services and Sanitation

Integrated delivery philosophy will provide the most cost effective and least disruptive delivery of street reconstruction incorporating Vision Zero and sustainable green street elements



Current Major Projects

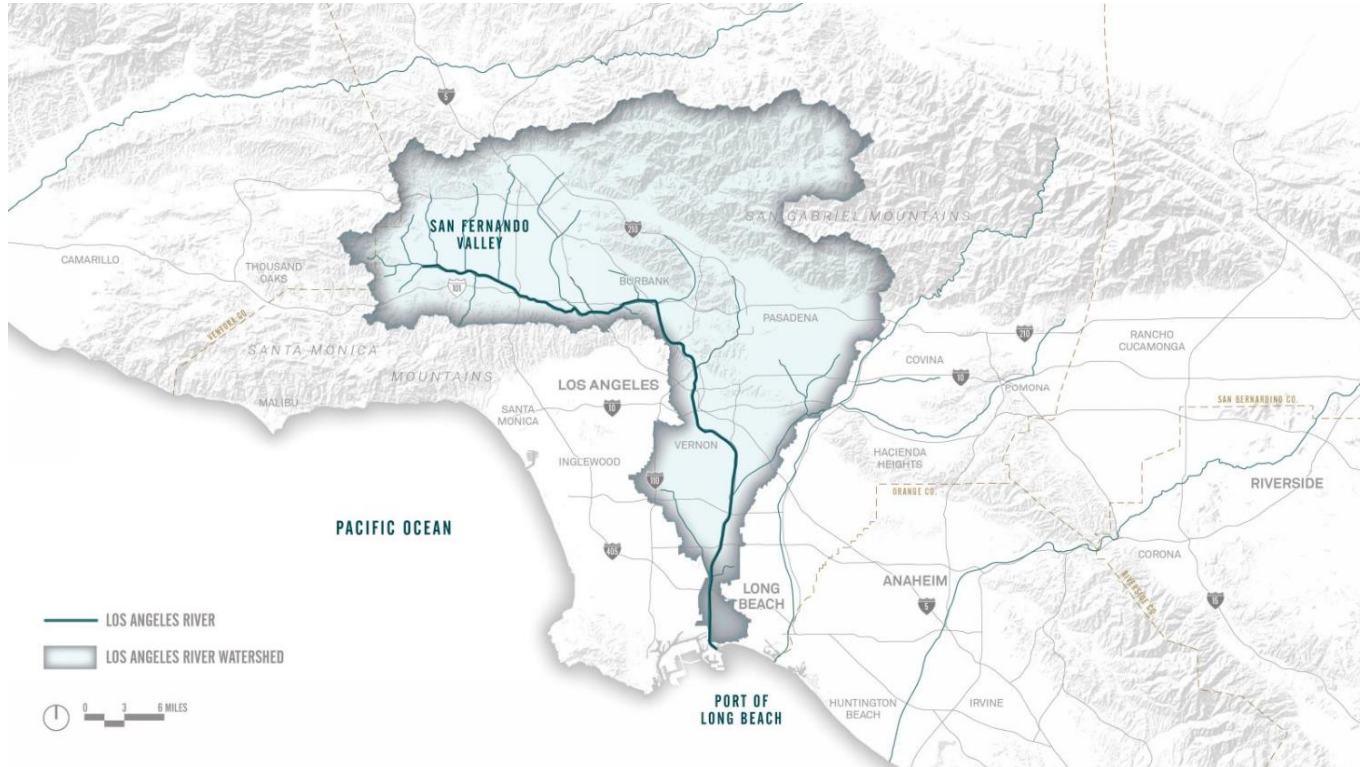
LA Street Civic Building



Part of the Civic Center Master Plan- a multi-year effort to add 1.2 million square feet of office space to the area around City Hall along with housing and retail space.

Current Major Projects

LA River Revitalization Master Plan



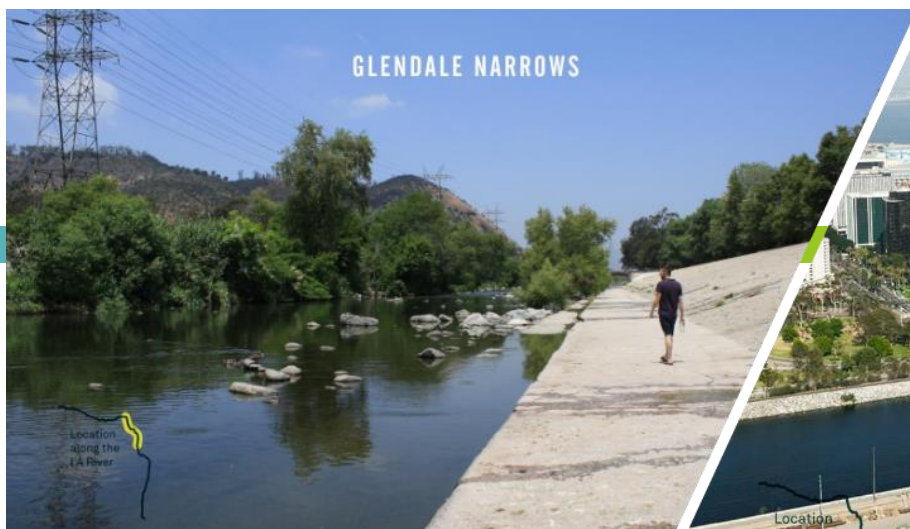
LA River Revitalization Master Plan



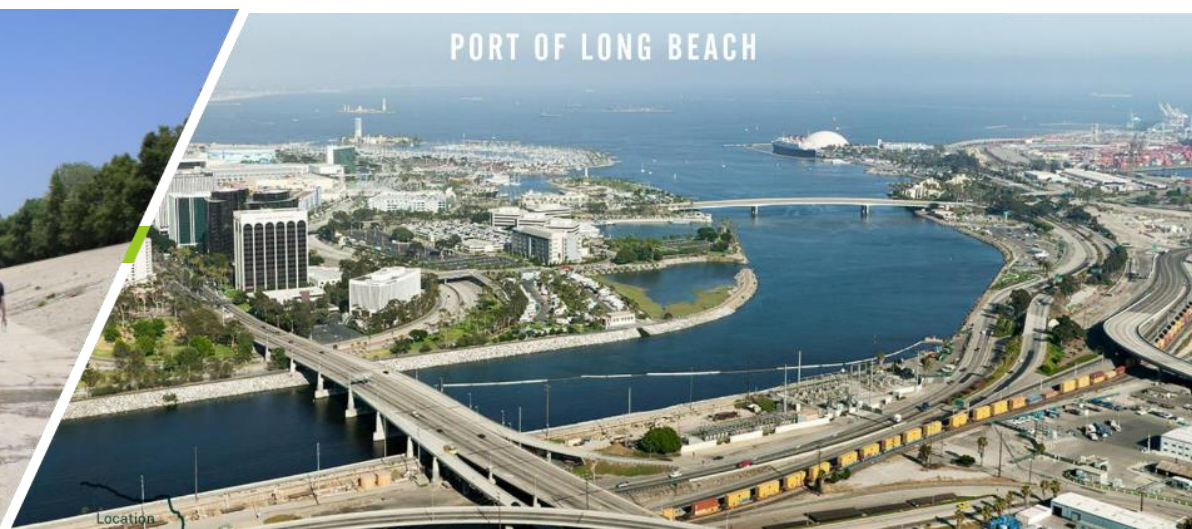
April 2007

LOS ANGELES RIVER REVITALIZATION MASTER PLAN

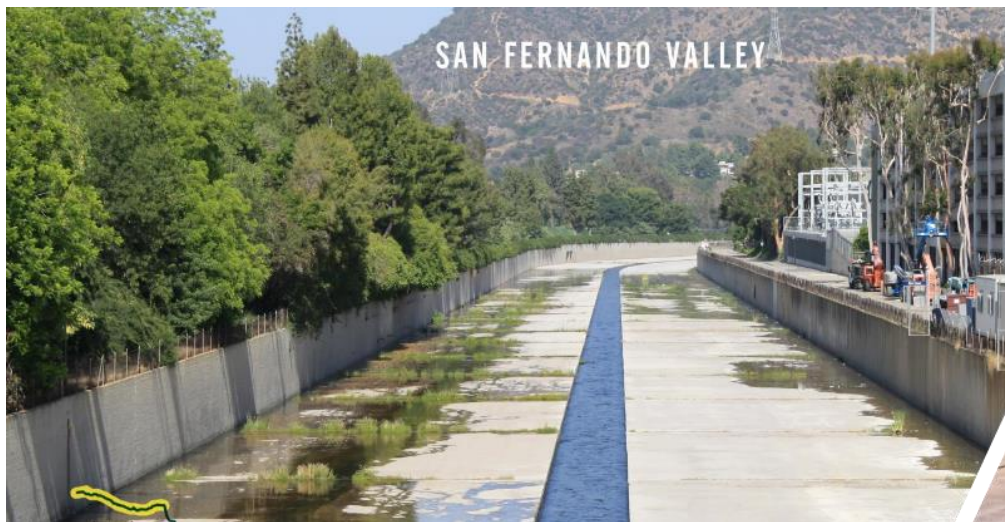
GLENDALE NARROWS



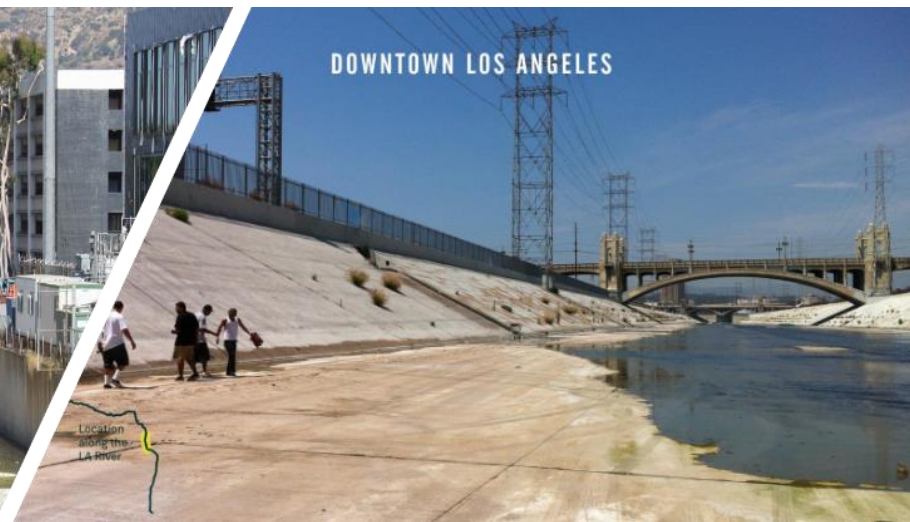
PORT OF LONG BEACH



SAN FERNANDO VALLEY



DOWNTOWN LOS ANGELES



Current Major Projects

Taylor Yard G2 & 100 Acre Partnership

**CONNECTING OVER 100 ACRES OF OPEN SPACE ALONG THE
LOS ANGELES RIVER**



Current Major Projects

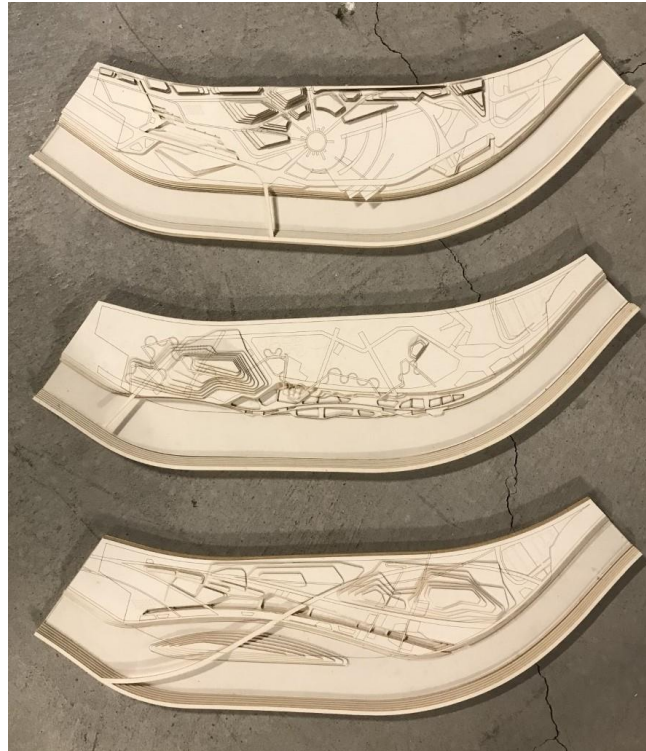
Taylor Yard G2 River Park Project

Crown jewel of LA River Revitalization

Engineering is leading the effort to develop the City's new, 42-acre parcel along LA River. Feasibility Report to be released this summer.

First develop interim site uses – first project is Paseo del Rio along the River's edge.

Will create unique public open space activities, address clean water goals, and support habitat on the site.



Taylor Yard G2 River Park Project

SOFT EDGE | PROPOSED SITE FEATURES AND PROGRAM ELEMENTS

SITE FEATURE

- 1 NATIVE NURSERY
- 2 ELYSIAN BRIDGE
- 3 ARBORETUM
- 4 THE CLIFF
- 5 LA LOMA
- 6 DISCOVERY PLAY
- 7 MEADOW
- 8 BIO-PLATEAU
- 9 THE FIELDS
- 10 BOULDER BEACH
- 11 ECOLOGICAL STITCH
- 12 THE ESPLANADE
- 13 RIVER STEPS
- 14 AMPHITHEATER
- 15 LAND BRIDGE
- 16 TAYLOR PLAZA
- 17 PARKING
- 18 TAYLOR YARD PEDESTRIAN BRIDGE

4.5 ACRES OF PROPOSED BUILDING FOOTPRINT

*2 STORY BUILDING
**3 STORY BUILDING

- 1 PARK OFFICE/ RANGER STATION*
- 2 KAYAK LAUNCH/CAFE
- 3 RECREATIONAL CAMPING + RESTROOMS
- 4 YOUTH ENRICHMENT CENTER
- 5 CAFE
- 6 RESEARCH BUILDING (PARKING BELOW)**
- 7 MUSEUM/CULTURAL CENTER*
- 8 PUBLIC FACILITY (PARKING BELOW)*
- 9 RESTAURANT
- 10 KAYAK LANDING/CAFE/KIOSK



Taylor Yard G2 River Park Project

THE YARDS | PROPOSED SITE FEATURES AND PROGRAM ELEMENTS

SITE FEATURE

- 1 BIO-HEDGE HABITAT MOUNDS
- 2 NURSERY + ARBORETUM
- 3 STORMWATER DEMONSTRATION GARDENS
- 4 RIVER WATER PUMP
- 5 THE WETLAND
- 6 RIVER AMPHITHEATER
- 7 NATURE PLAY
- 8 THE CANYONS
- 9 LAND BRIDGE
- 10 THE ROUND HOUSE
- 11 RIVER OUTFALL
- 12 FROGTOWN BRIDGE
- 13 MIRADOR
- 14 PRADO
- 15 VIEWING PLATFORM
- 16 RIVER STEPS
- 17 TAYLOR BOARDWALK
- 18 PLANTED EDGE ARMATURE
- 19 TAYLOR YARD PEDESTRIAN BRIDGE

4.5 ACRES OF PROPOSED BUILDING FOOTPRINT

*2 STORY BUILDING
*3 STORY BUILDING

- 1 PARK OFFICE/RANGER STATION*
- 2 KAYAK LAUNCH/CAFE
- 3 RECREATIONAL CAMPING + RESTROOMS
- 4 YOUTH ENRICHMENT CENTER
- 5 CAFE
- 6 RESEARCH BUILDING**
- 7 MUSEUM / CULTURAL CENTER*
- 8 PUBLIC FACILITY (PARKING BELOW)*
- 9 RESTAURANT
- 10 KAYAK LANDING/CAFE/KIOSK



Taylor Yard G2 River Park Project

ISLAND | PROPOSED SITE FEATURES AND PROGRAM ELEMENTS

SITE FEATURE

- 1 SYCAMORE GROVE
- 2 DISCOVERY PLAY
- 3 MEADOW
- 4 WILLOW UPLAND
- 5 LOW FLOW WALKWAY
- 6 ISLAND ECO RESERVE/LAB
- 7 RIVER EXHIBITION PAVILION
- 8 FLOATING ISLANDS
- 9 RIVER DECK
- 10 NATIVE COLLECTIONS
- 11 THE CROSSING
- 12 SCULPTURE GARDEN
- 13 AMPHITHEATER
- 14 ARBORETUM
- 15 VIEWING DECK
- 16 PARKING
- 17 TAYLOR YARD PEDESTRIAN BRIDGE

4.5 ACRES OF PROPOSED BUILDING FOOTPRINT

*2 STORY BUILDING
**3 STORY BUILDING

- 1 PARK OFFICE/ RANGER STATION*
- 2 KAYAK LAUNCH/ CAFE
- 3 RECREATIONAL CAMPING + RESTROOM
- 4 YOUTH ENRICHMENT CENTER
- 5 CAFE
- 6 RESEARCH BUILDING*
- 7 MUSEUM/CULTURAL CENTER*
- 8 PUBLIC FACILITY (PARKING BELOW)**
- 9 RESTAURANT
- 10 KAYAK LANDING / CAFE / KIOSK





LA RiverWay – San Fernando Valley

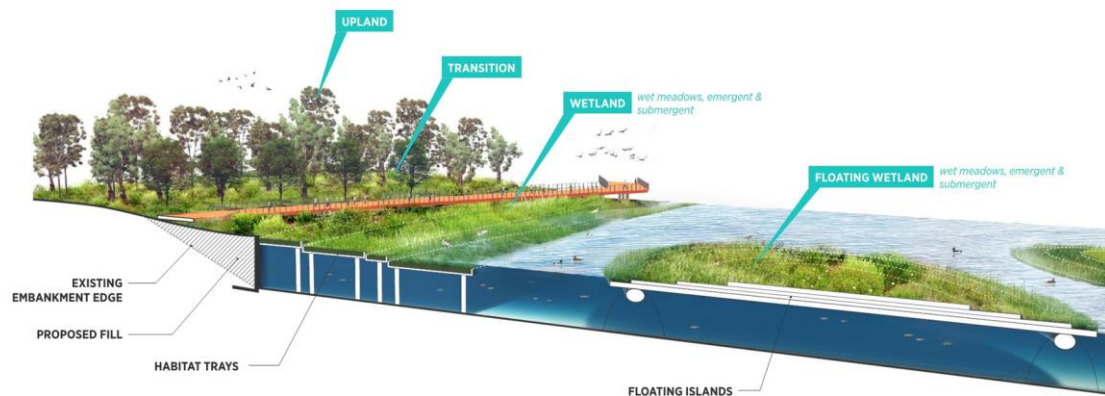


North Atwater Equestrian & Pedestrian Bridge





Silver Lake Reservoir Complex Master Plan



Silver Lake Reservoir Complex Master Plan



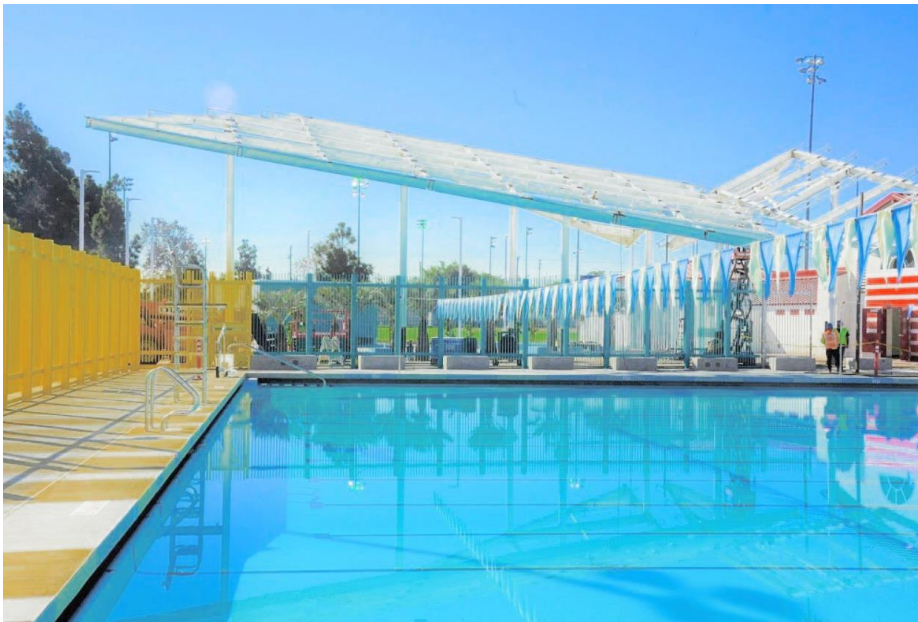
Silver Lake Reservoir Complex Master Plan



Silver Lake Reservoir Complex Master Plan



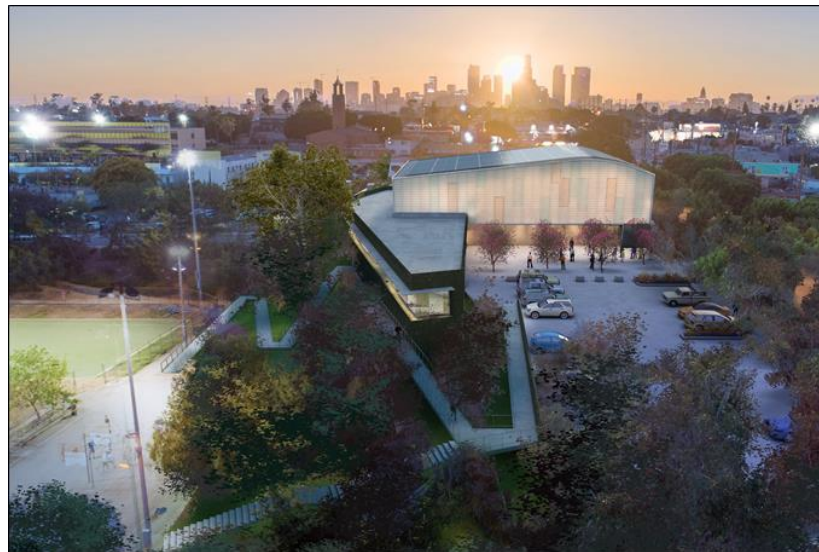
Algin Sutton Pool



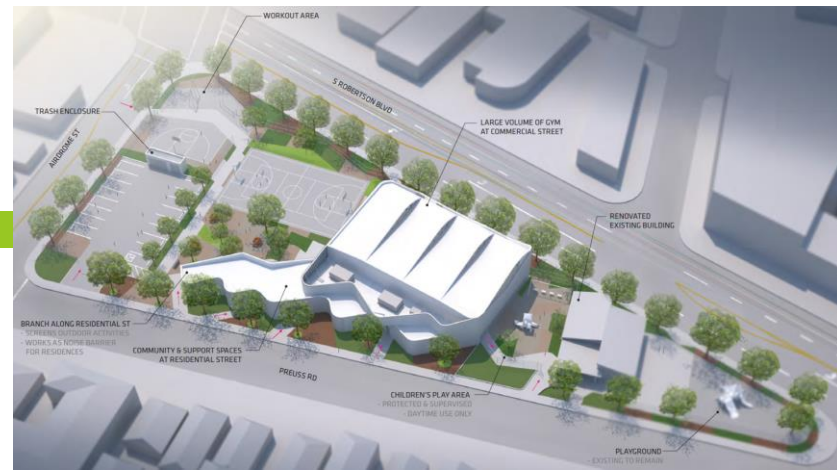
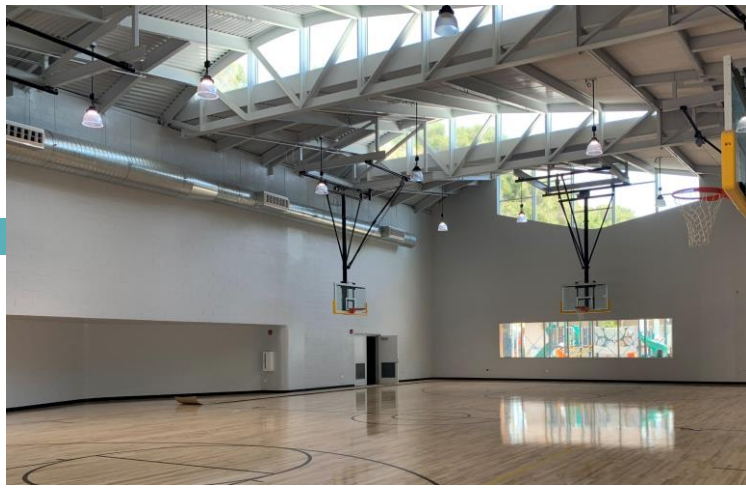
Lincoln Park Pool



Hey Rookie Pool & Boyle Heights Gymnasium







Robertson
Rec Center



Arts District Park



Spring Street Park



Rancho Cienega Park/Obama Park



Hansen Dam Rangers' Station





CD 9 Neighborhood City Hall



Council District 7 Neighborhood City Hall



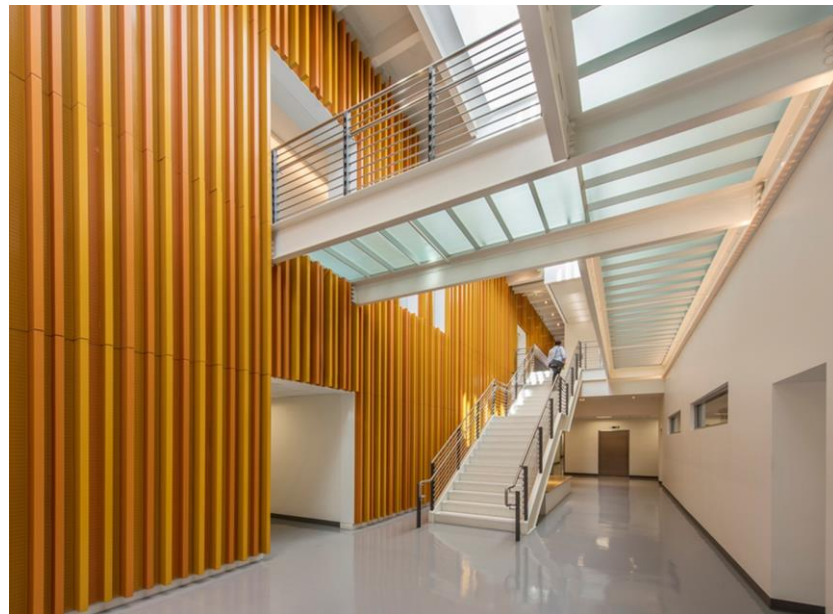
Silver Lake Library



Harbor Animal Shelter



Metro Police Station



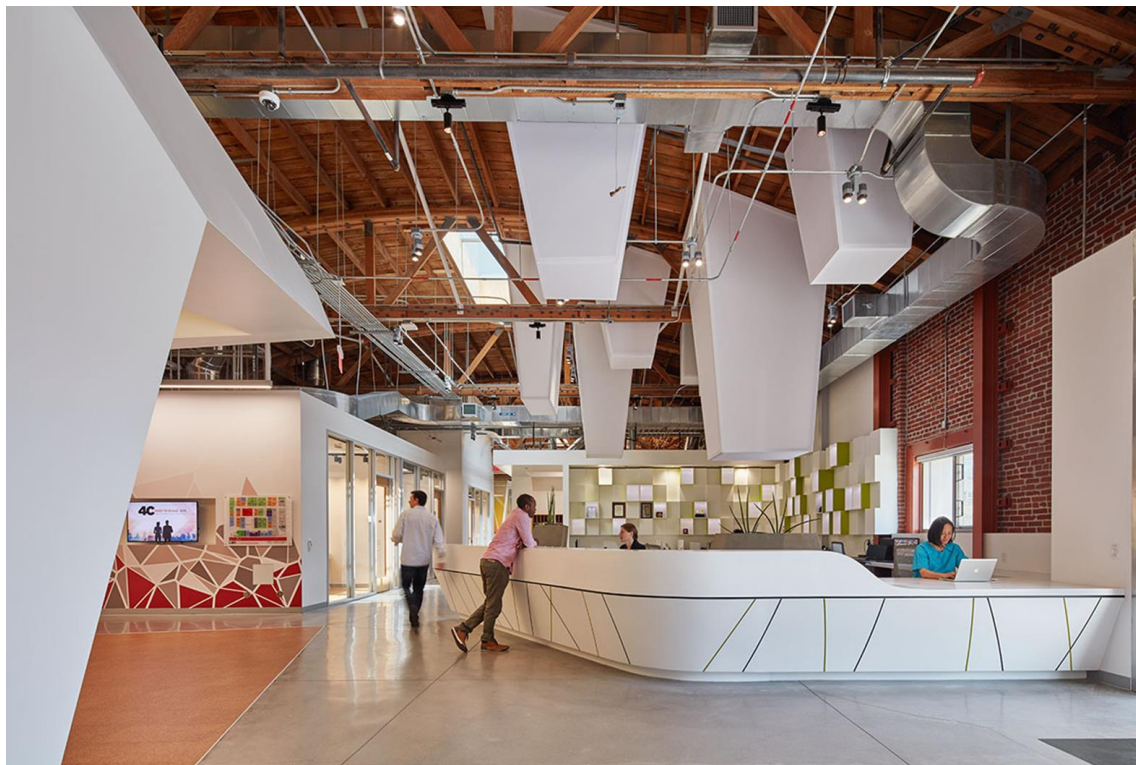
Police Administration Building



LADOT Bus Maintenance Facility



LA Cleantech Incubator – LaKretz Innovation Campus



Sunset Boulevard Retaining Wall



Santa Monica Transitway Retaining Wall



DESIGN | MULTNOMAH TO MISSION

Here are a few images showing the Mission/Multnomah section of the wall. The wall includes the steel mesh system that we discussed- in most cases deployed in a way that is two-dimensional. It includes one moment of three-dimensionality forming a bench and shade canopy.



Soto Bridge
& Retaining
Wall

Asphalt Plant



Echo Park Lake Rehabilitation



Greek Theatre Renovation



Hollyhock House Restoration





Deborah Weintraub, AIA, LEED_{AP}
Chief Deputy City Engineer
deborah.weintraub@lacity.org

Thank You!