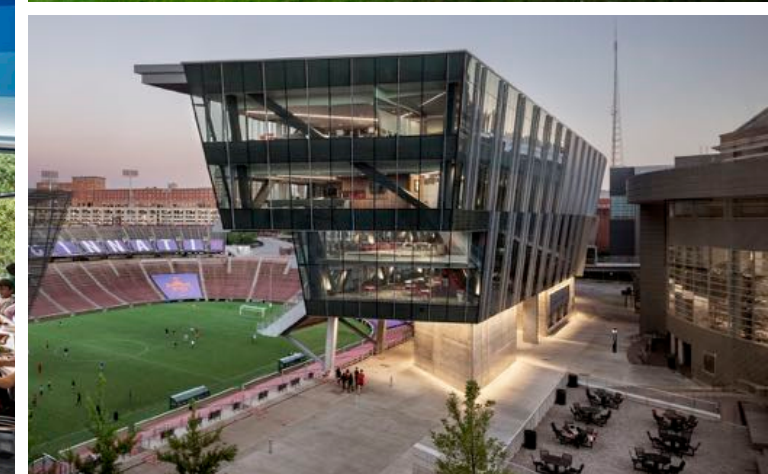
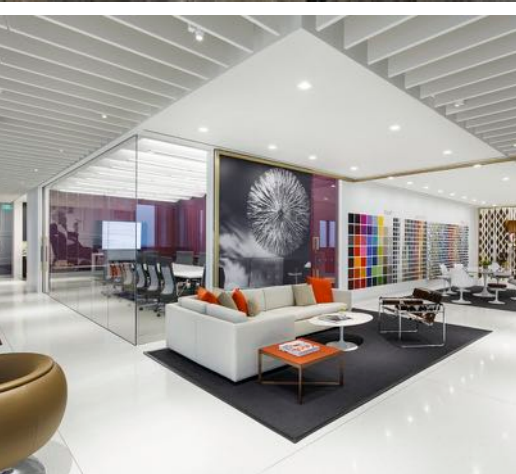

PRACTICE, PANDEMIC AND THE PROFESSION











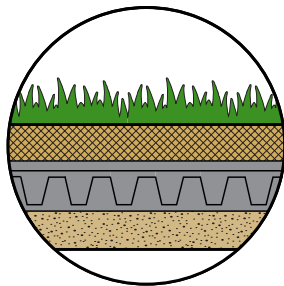




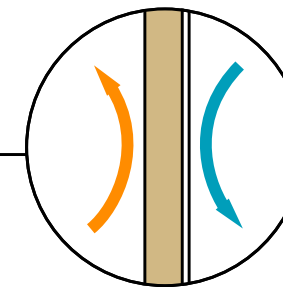




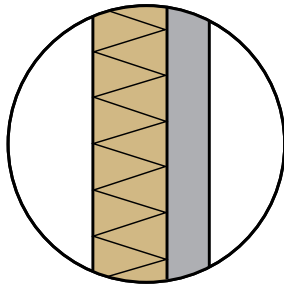
GREENROOF



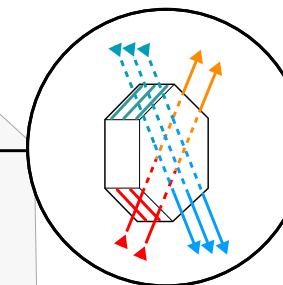
AIR TIGHTNESS



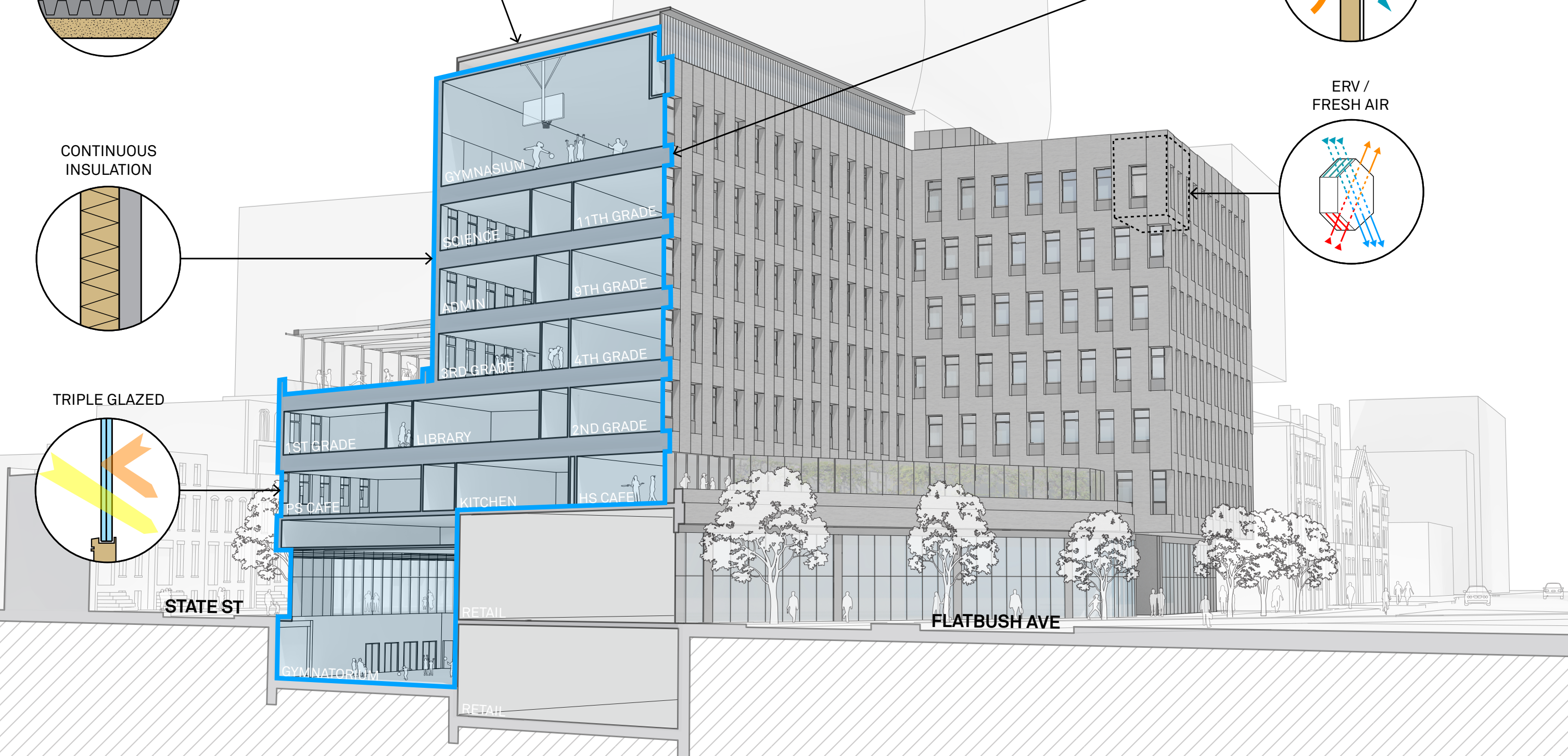
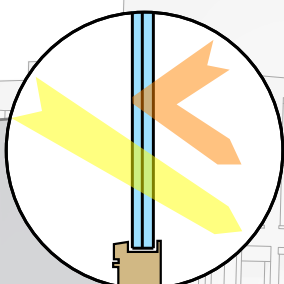
CONTINUOUS INSULATION



ERV / FRESH AIR



TRIPLE GLAZED



STATE ST

FLATBUSH AVE

GYMNASIUM

RETAIL

RETAIL

1ST GRADE

LIBRARY

2ND GRADE

PS CAFE

KITCHEN

HS CAFE

3RD GRADE

4TH GRADE

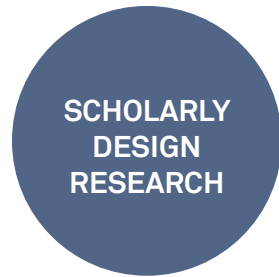
ADMIN

9TH GRADE

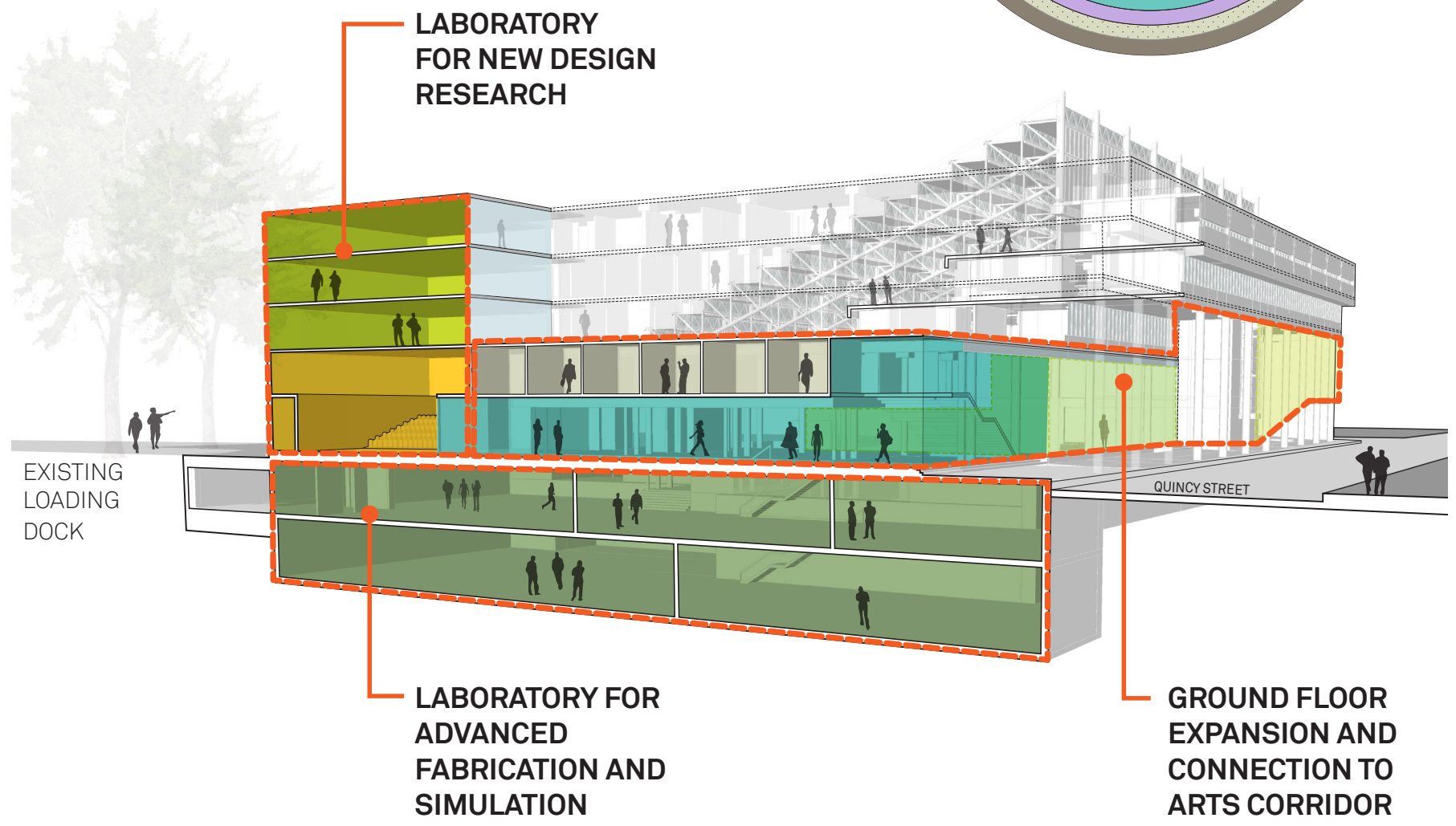
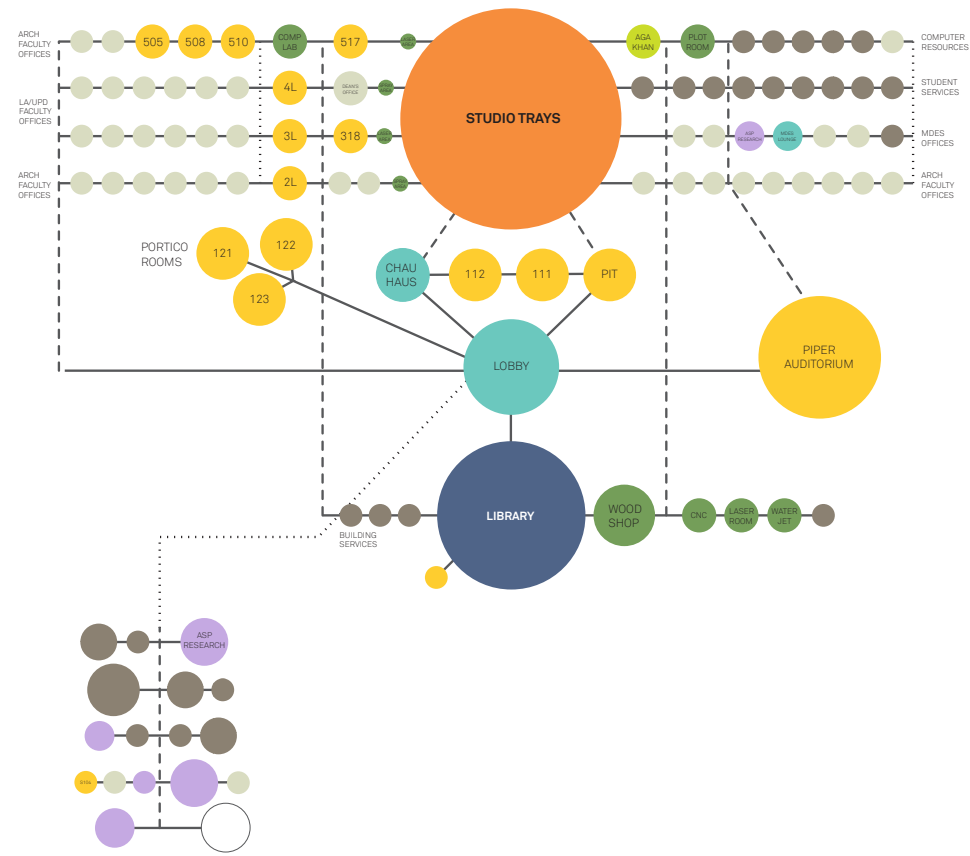
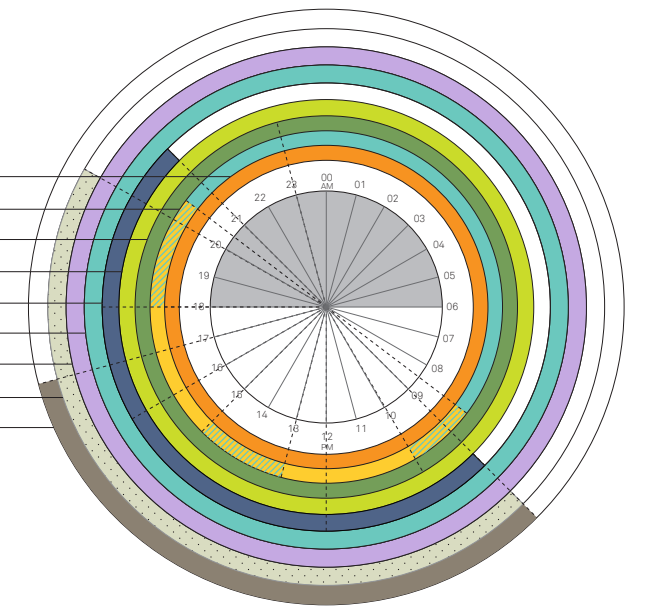
SCIENCE

11TH GRADE

GYMNASIUM



- STUDIO SPACE
- CLASSROOMS
- FAB SHOPS AND COMPUTER LABS
- RESEARCH LABS
- LIBRARY
- PUBLIC/Common/INFORMAL SPACE
- ADVANCED STUDIES RESEARCH AREAS
- FACULTY OFFICES
- STAFF OFFICES



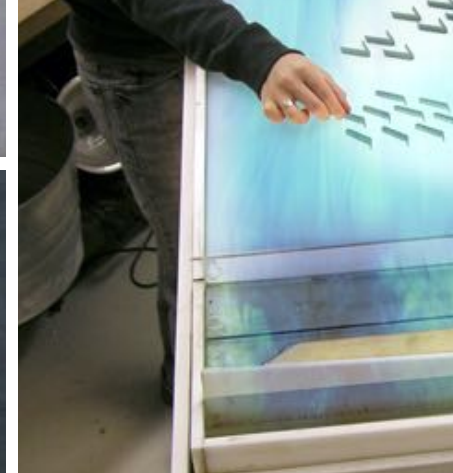
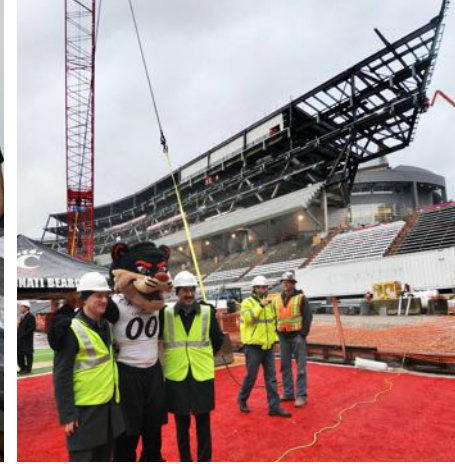
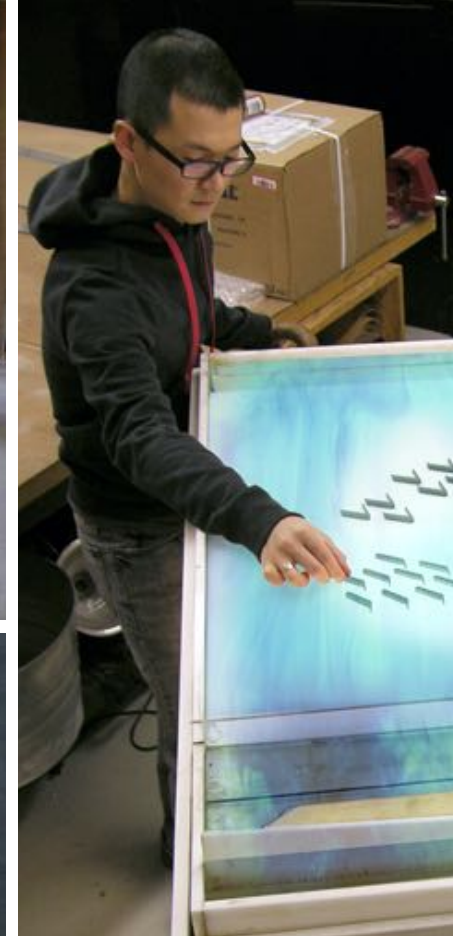


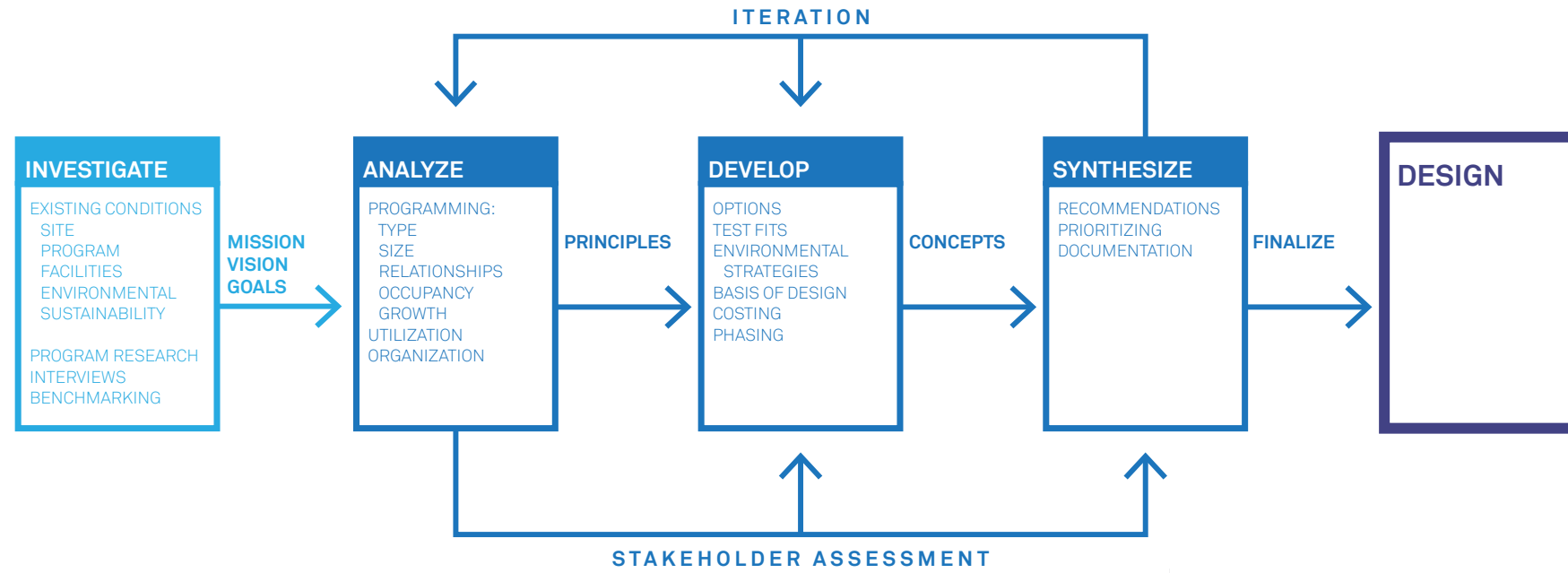


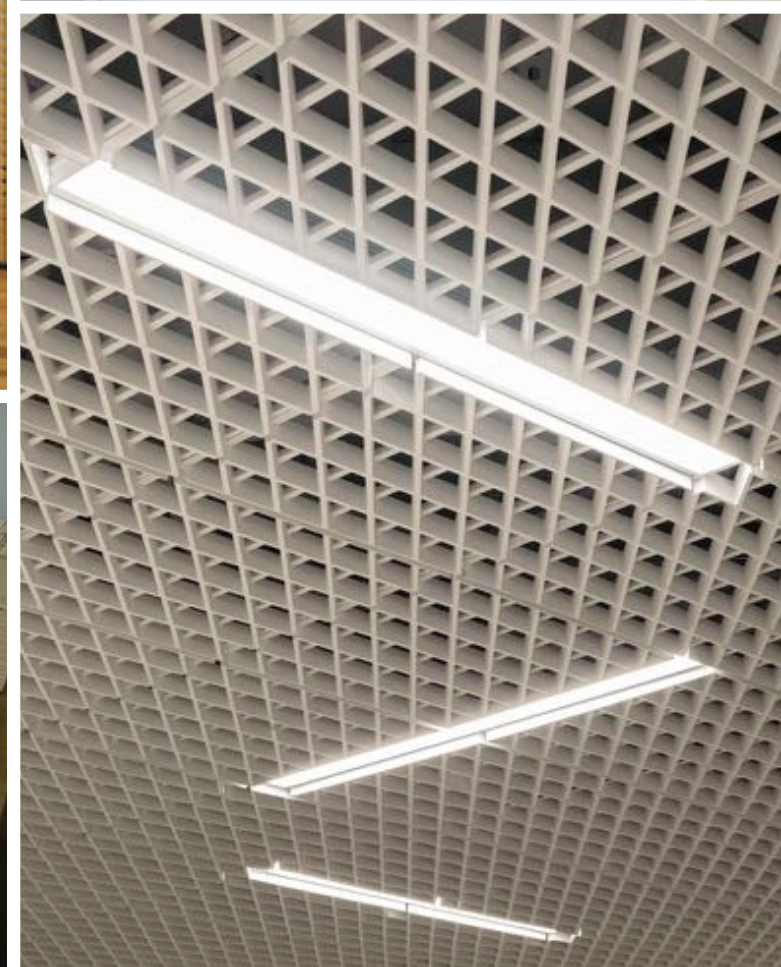
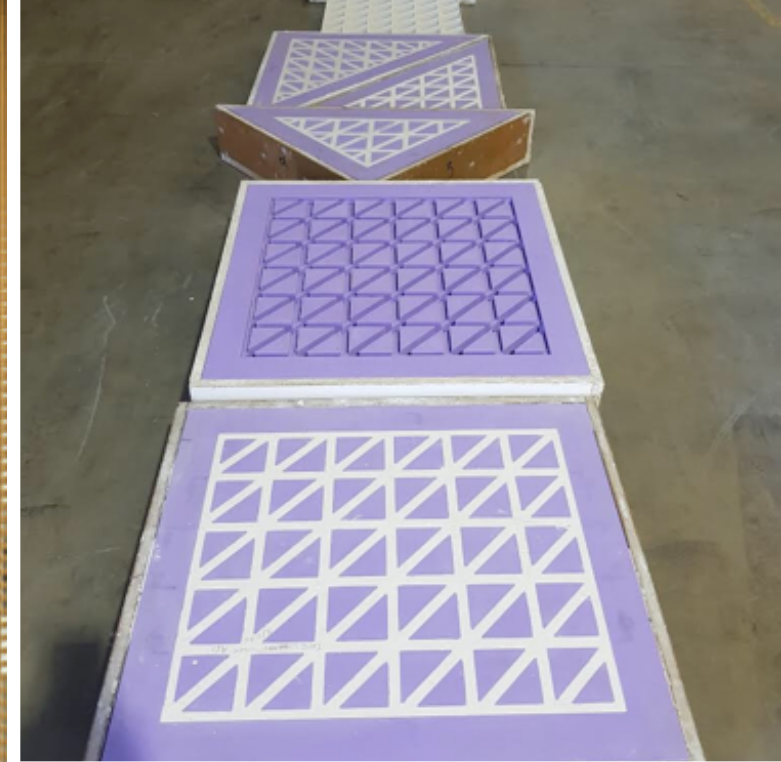
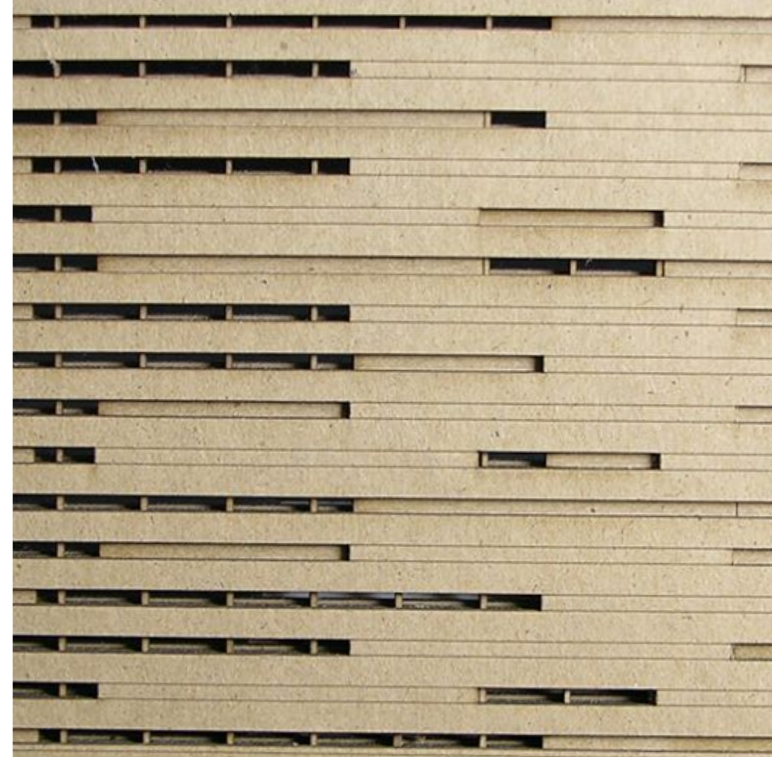


THE AIA NATIONAL
2020 ARCHITECTURE FIRM













STARBUCKS

Elevator to mezzanine

STRANDED BY CUOMO!

Fix Our Elevators

I ❤️ ELEVATORS

BROKEN ELEVATORS

CUOMO HELP US

RIDERS ACCIDENTAL

T

PINCER



AIA
New York



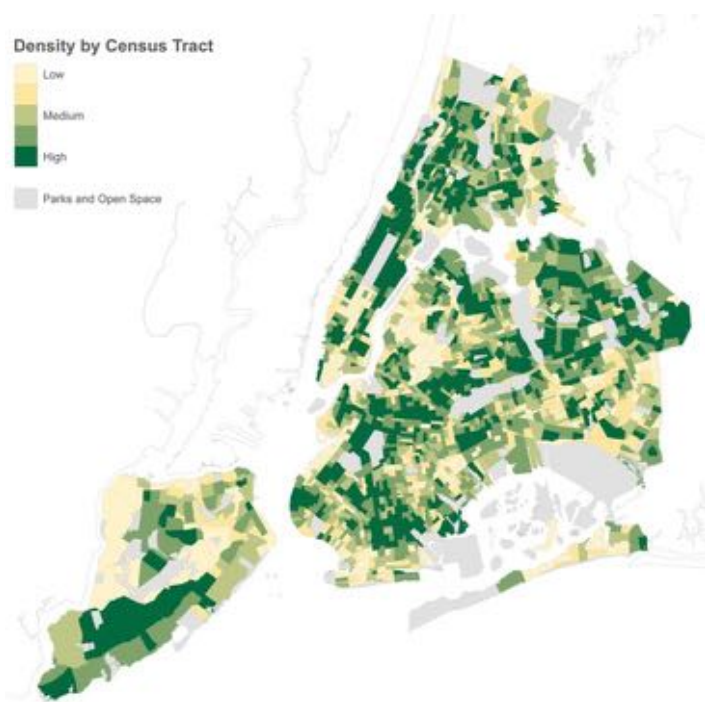






CHARTING **NYC 2020**

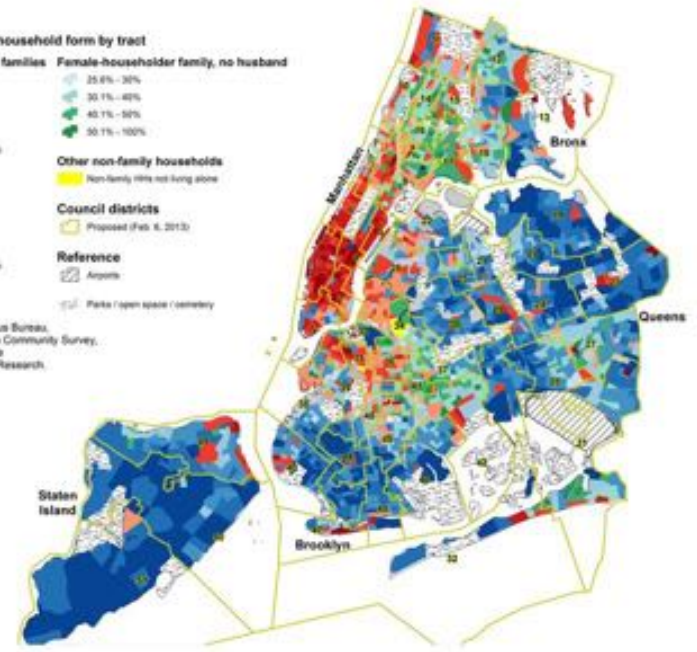
Density by Census Tract



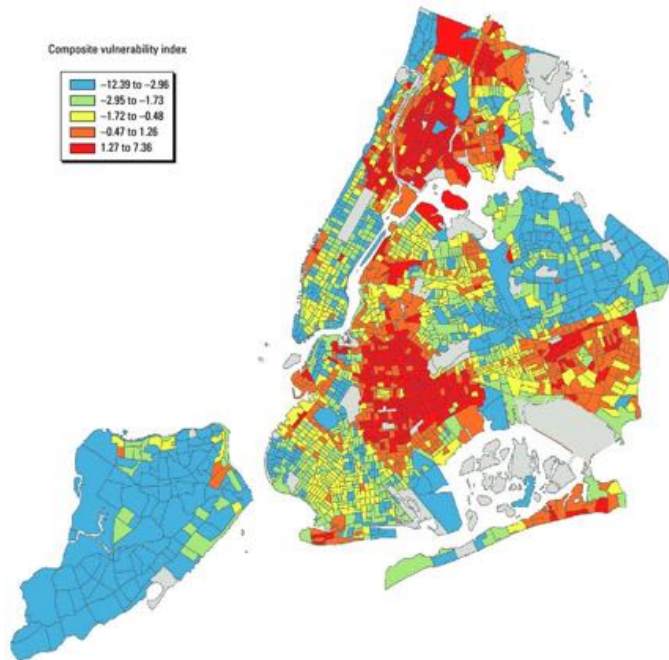
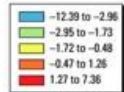
MAP 2 Predominant household form by tract



Source: US Census Bureau, 2007-11 American Community Survey, as analyzed by the Center for Urban Research.



Composite vulnerability index





THE WALL STREET JOURNAL.

U.S. | NEW YORK | POLITICS

New York City Readies for Epic Election Season in 2021

Because of term limits enacted in 2001, 41 out of the city's 59 elected positions will be open

By *Katie Honan*

Sept. 8, 2019 9:00 am ET

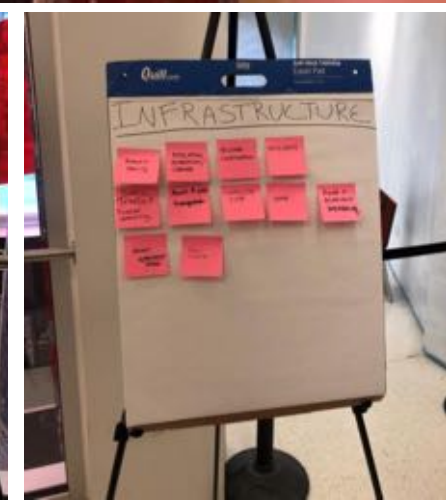
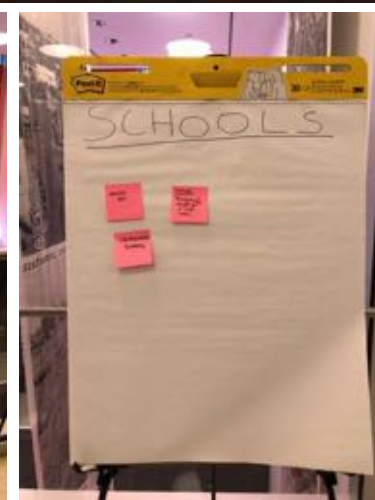
CHARTING NYC 2020



CIVIC DATA DESIGN LAB







Watch How the Coronavirus Spread Across the United States

By Lazare Gamio, Mitch Smith, Karen Yourish and Sarah Almukhtar March 21, 2020



Note: This map shows the current locations of coronavirus cases by county. Color is used to the number of people there who have tested positive, which may differ from where they contracted the virus. Some people who traveled overseas and later got treatment in California, Tennessee and Texas. Puerto Rico and the other U.S. territories are not shown. Sources: State and local health agencies, hospitals and CDC. Data as of 11:00 a.m. on Friday, March 20.

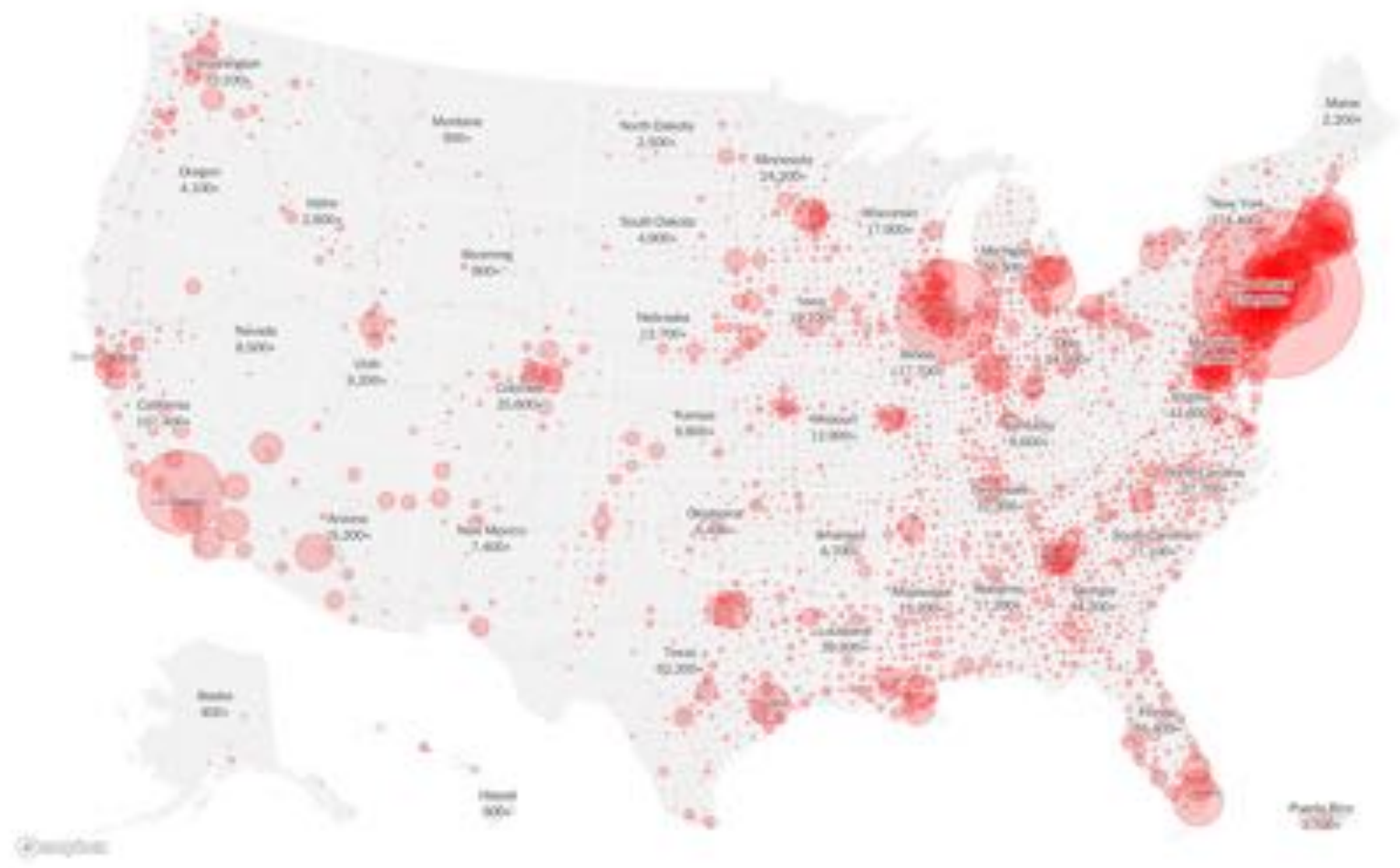
It started [two months ago](#), just north of Seattle. A young man who

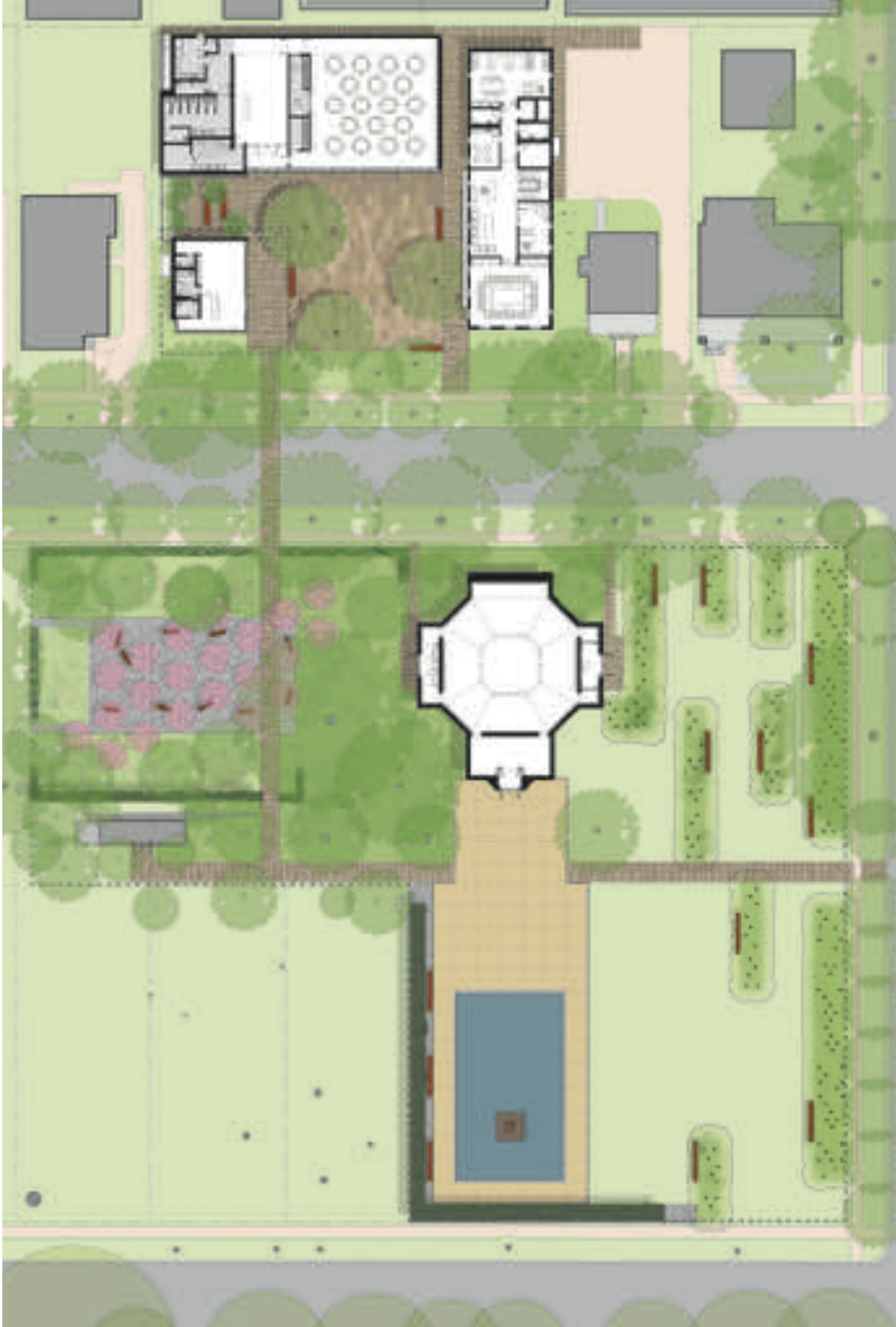
Hot spots in the United States

Hot spots	Total cases	Deaths	Per capita
-----------	-------------	--------	------------

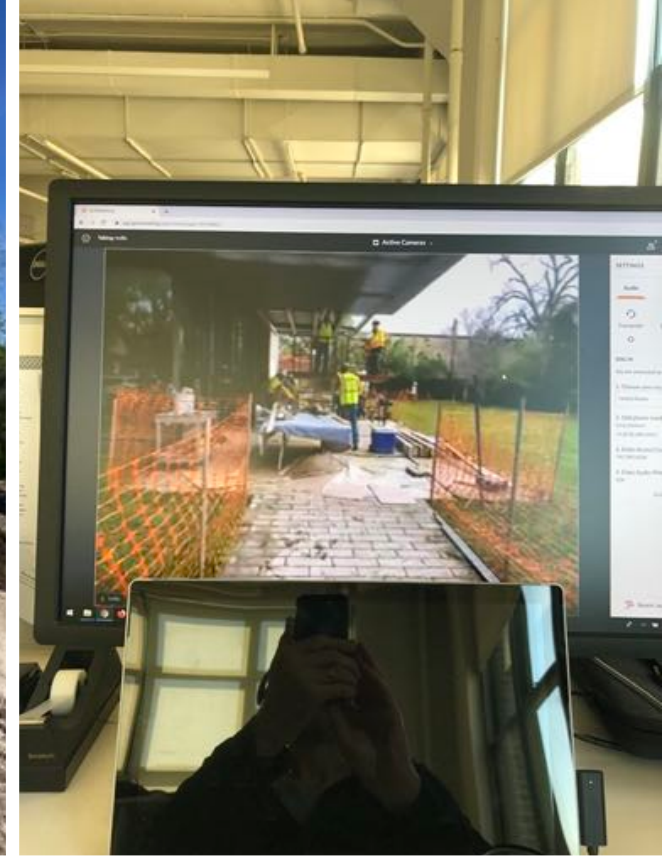


Source: data by state and by city





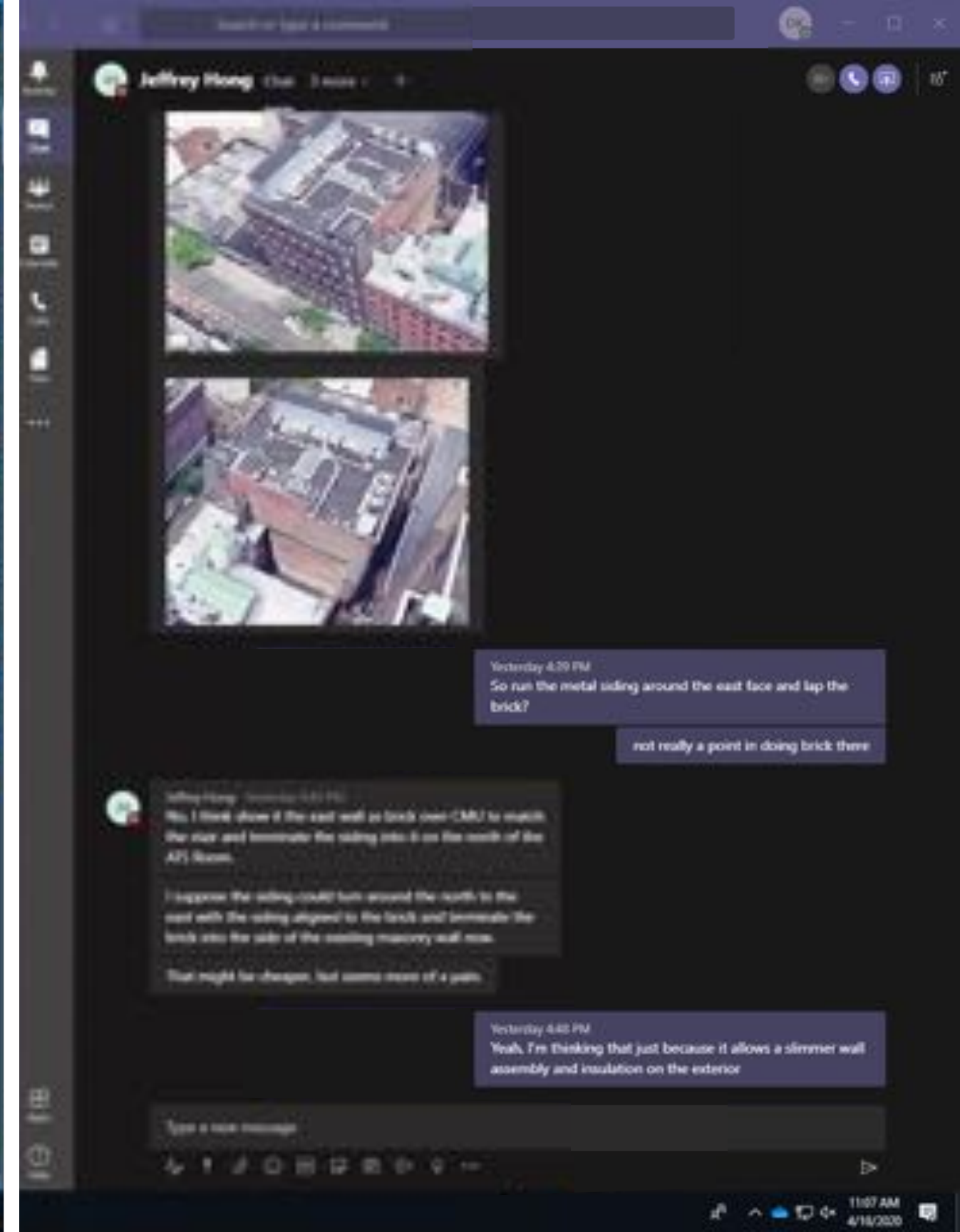
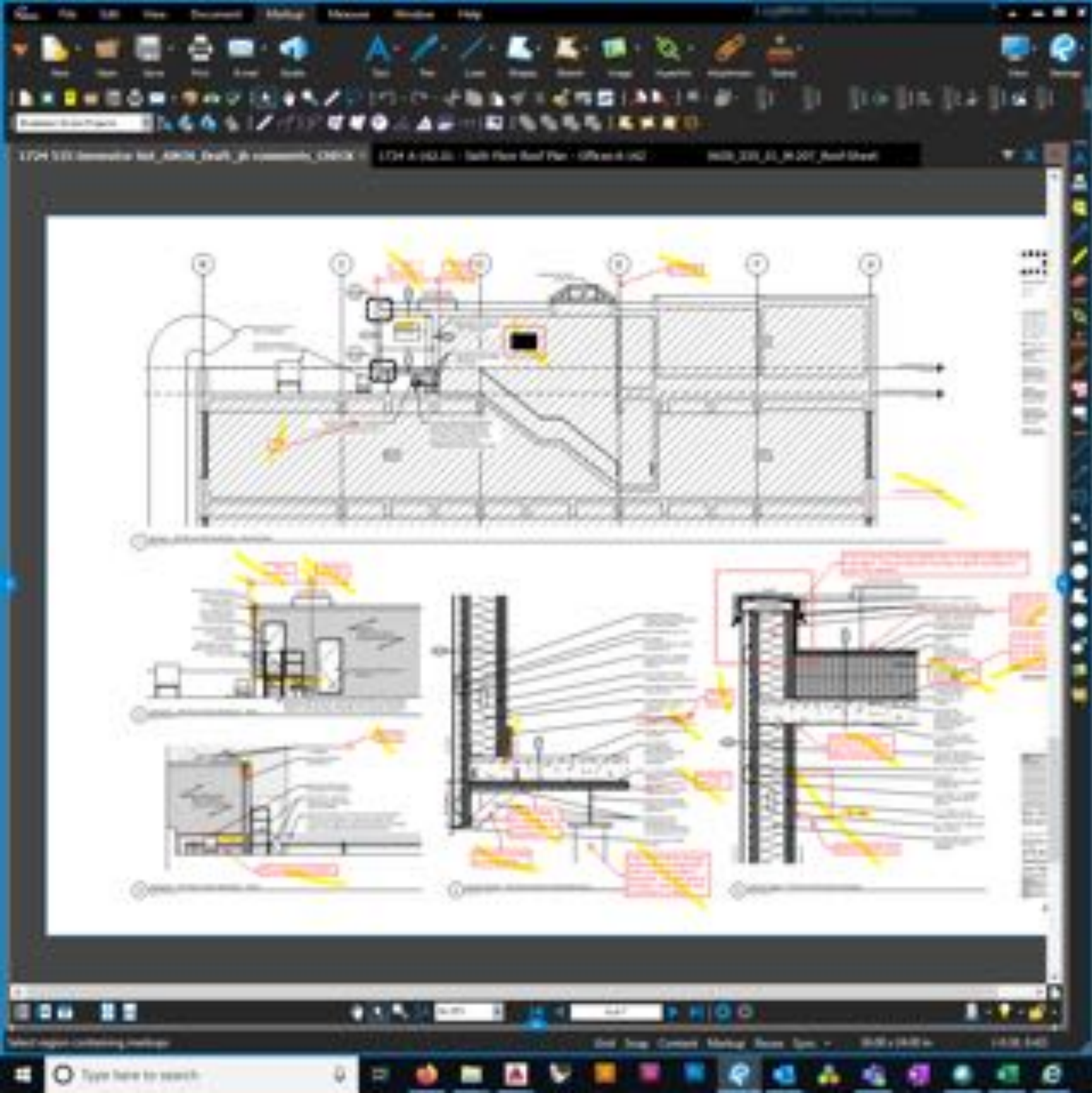


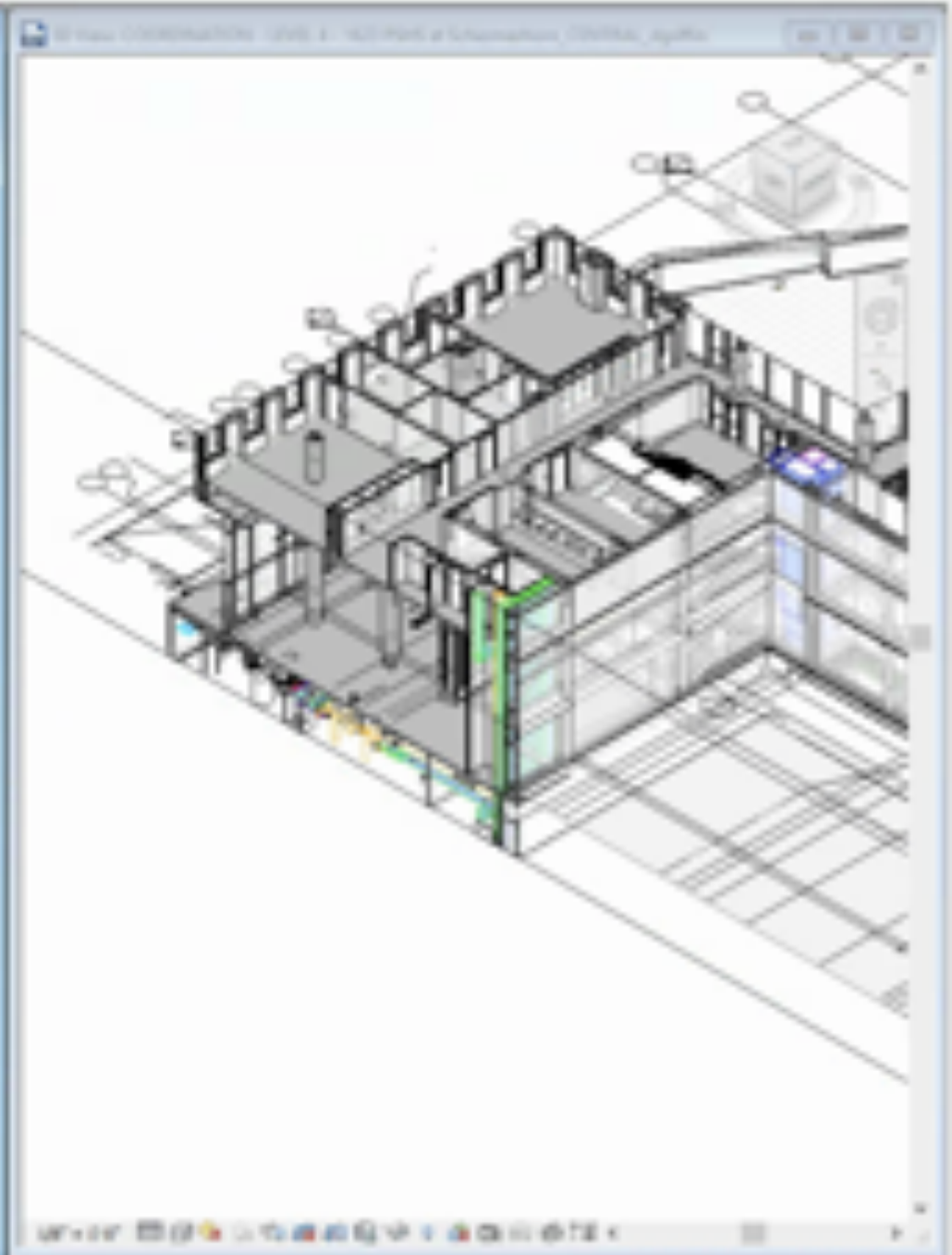
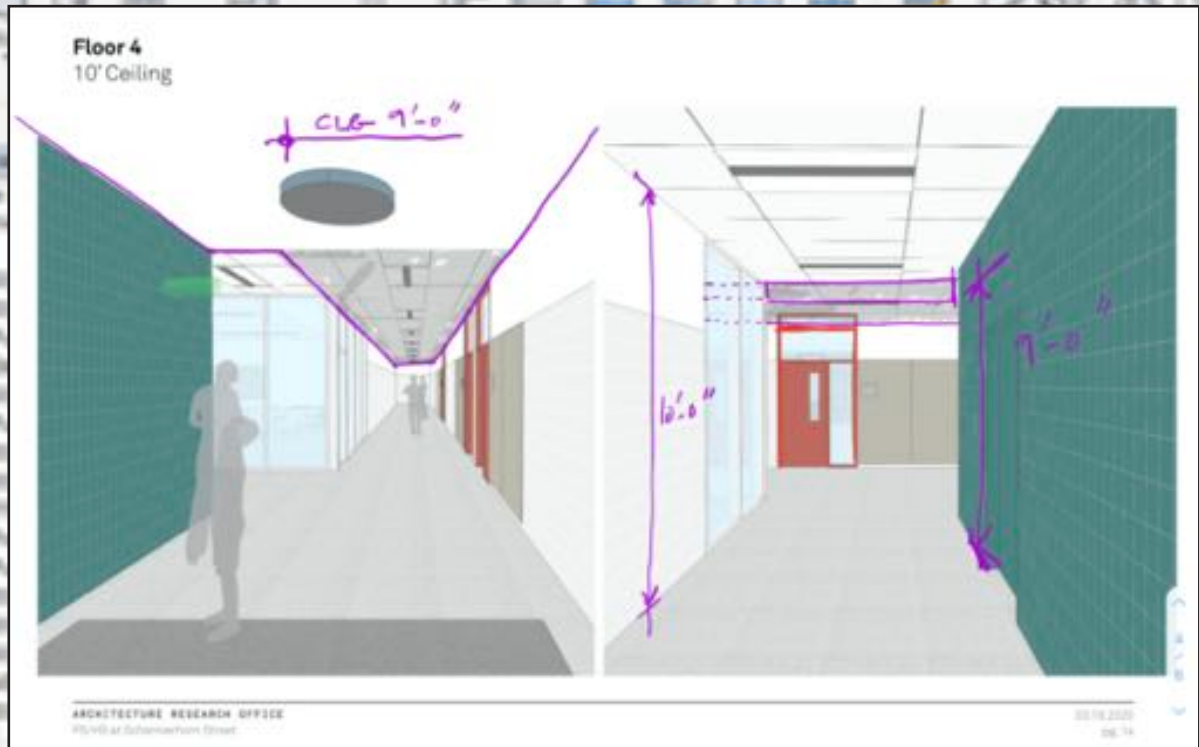




Stephen Carroll







3D View COORDINATION - CELLAR Copy 1

3D View COORDINATION - Subway

3D View COORDINATION - LEVEL 1

3D View COORDINATION - LEVEL 2

3D View COORDINATION - LEVEL 3

3D View COORDINATION - LEVEL 4

3D View COORDINATION - LEVEL 4 Copy 1

3D View COORDINATION - LEVEL 5

3D View COORDINATION - LEVEL 6

3D View COORDINATION - LEVEL 7

3D View COORDINATION - LEVEL 8

3D View COORDINATION - LEVEL 9

3D View COORDINATION - LEVEL 10

3D View COORDINATION - STAIR 1

3D View COORDINATION - STAIR 2

3D View COORDINATION - STAIR 3

3D View COORDINATION - STAIR 4

3D Series

3D Energy

General Settings

General Notes

Mechanical Detail Details

Partition Types

View Type: CONET CLORD

View Sub Type:

Sub-Category:

Category:

View Creator Address:

Options

Crop View:

Crop Region Visible:

Annotation Crop:

Far Clip Active:

Far Clip Offset: 100' 0"

Section Box:

Camera

Rendering Settings: 3D

Locked Orientation:

Perspective:

Eye Elevation: 48' 11 1/4"

Target Elevation: 48' 11 1/4"

Camera Position: Adjusting

Identity Data

View Template: COORDINATION 3D

View Name: COORDINATION - L...

Dependency: Independent

Title on Sheet:

Properties Help

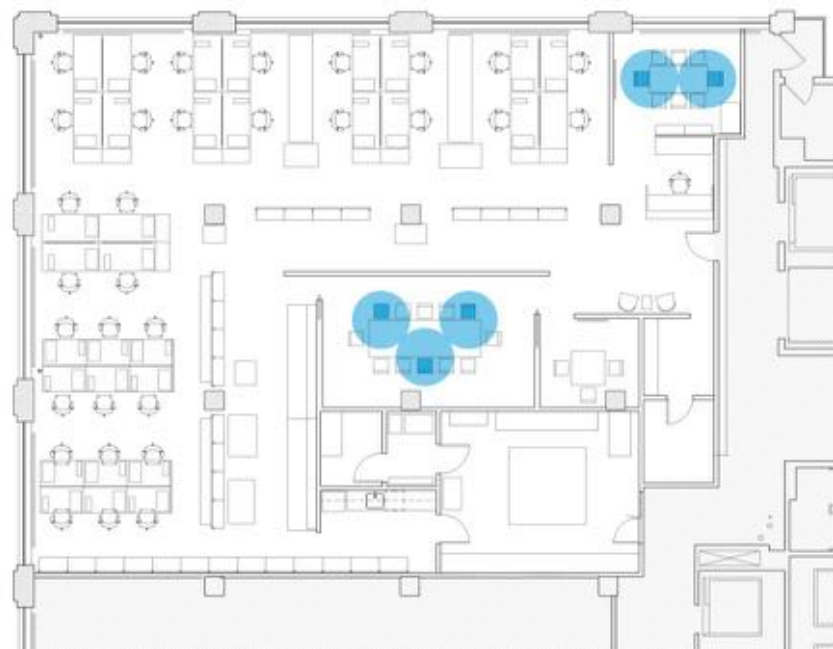
Apply



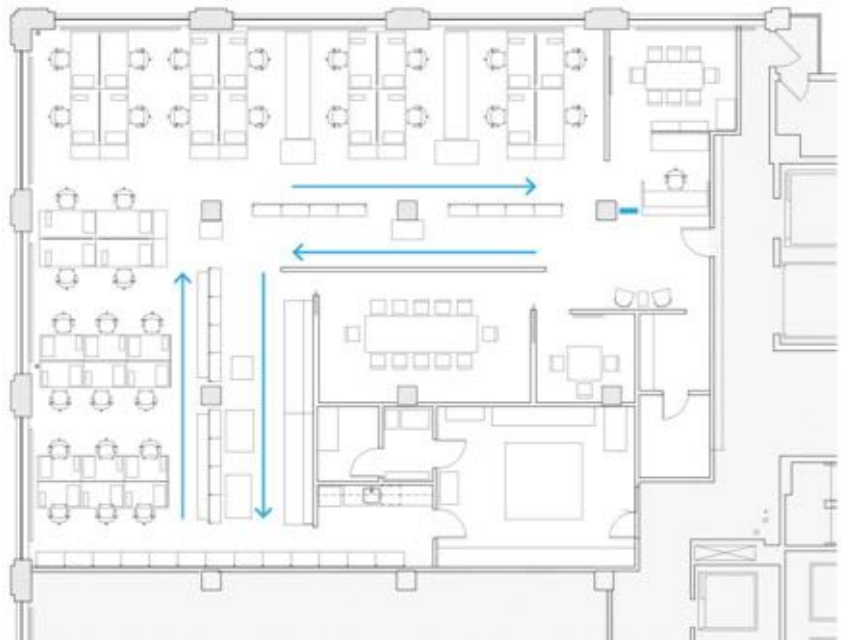




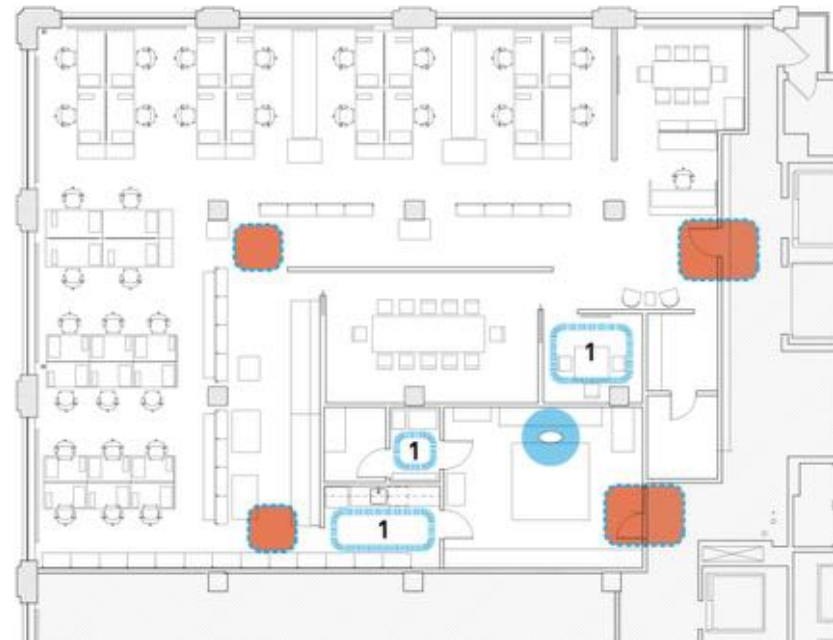
OVERLAY OF COVID DISTANCING



MEETING SPACES



ONE-WAY CIRCULATION PATTERN



SINGLE-OCCUPANCY ZONES AND PINCH POINTS

The Center for Architecture is closed temporarily as we continue to evaluate and update our response to COVID-19. See our [Calendar](#) for virtual programming. Read a message on our [current initiatives](#).





BUILDING OUR COMMUNITY



AIA
New York

**CENTER FOR
ARCHITECTURE**

TOWN HALL: COPING WITH COVID-19 TOGETHER

March 27, 2020





AIA New York Architecture Membership Resources

COVID-19 (PDRV)

- Latest City Municipality Agency Updates and Districts under COVID-19 (Minnel Consultants)
- COVID-19 and Real Estate: How the Coronavirus is Impacting the AEC Industry (Building Design + Construction)
- Construction Industry Information (New York Building Congress)
- COVID-19 Preparedness Resources (AIA/RAI)

Industry Updates

- COVID-19 and Real Estate: How the Coronavirus is Impacting the AEC Industry (Building Design + Construction)
- Construction Industry Information (New York Building Congress)
- COVID-19 Preparedness Resources (AIA/RAI)

Small Business Support

- Contingency Planning for Small Firms (AIA Colorado)
- Small Firm Exchange (AIA)

Business Advice and Resources

- Straight-to-work Advice on Preserving Cash Flow (AIA Trust)
- AIA Foresight Report: Navigating Through a Recession with New Business Models (AIA)
- Staying Focused During Radical, Unprecedented Change (Practice of Architecture)
- 3 Tips for Using a Business Credit Card During the Coronavirus Pandemic (CHBC)
- AIA/ITP Marketplace website listings are now FREE for members. You can use this platform to request or offer services or assistance. Email marketplace@aiany.org to let your voice be heard.

Iterative LLPs

- Coronavirus (COVID-19) Update for Employees (Optimal Design LLP)
- COVID-19 and Workers Compensation Considerations (HR Workplace Services)
- Payroll & Leave Considerations (HR Workplace Services)
- EEOC Guidance on COVID-19 (HR Workplace Services)
- COVID-19 Payroll/Leave/Service Letter (HR Workplace Services)

Participants (17)

Find a participant

- Kimberly Yao (M)
- AIA/IT Center for Architecture... (Host)
- janerandh
- Kennethorely
- 16664160796
- 19178807393
- abigail

Unmute Myself Mute All

KingCentral Meetings Group Chat

2

From Matthew Bennett to Everyone
4:2

From John to Everyone
4

From Michael Chen to Everyone
4

From PE to Everyone
5

From janerandh to Everyone
5:5

To: Everyone v More v

Type message here...

Earth Day Dialogue: Designing for Planetary and Public Health - 04.22.2020





Reimagining New York, Health, and Wellness in the Built Environment

May 21, 2020

[+ Add to Calendar](#)

Task Force Mission:

The overarching umbrella for this new, full-spectrum task force is the engagement of the design community, AEC organizations, and government agencies in an effort to create guidance and understand the complexities surrounding a post-COVID-19 city and state. We recognize that each building type and environmental condition will be affected by COVID-19 and that subsequent environmental hazards similar to this pandemic will create a variety of challenges that can be mitigated in part through updated design and building practices.



 Sarah F. Williams	 Kim Yoo	 Ben Zorog	 Ben Hoff Lavender	 Heather Wang
 Glen	 Eric Hundley	 Tara Sharma	 Jonathan	 Alex
 Jun Li	 Avery Uhl	 Angela Martinez-Gil	 Yuan Lei	 Crista Messeri Albert
 Yanlian Li	jingyi	barbaraalonso	 Amber Youngbin Kim	 Laura Kim
 Zhuangqun Fan	meital	Di Zeng	Val	 Natasha L. Spangler



Research Question

Underlying Question
How can we make sense of what Local Law 97 requires?

Question 1
What amount of GHG reduction is required for property owner to comply with Local Law 97?

Question 2
What are the financial implications for building owners to comply with Local Law 97?

Question 3
What are the trends/patterns in building GHG emissions in NYC?

Question 4
How can buildings adjust current uses of energy to decrease GHG emissions?



 Sarah J. Williams	 Eun. Yoo	 Jeehyun	 Joon Ahn	 Eun. Yoo
 Allison Martinez	 Glen Cummings	 Mehmet H. Hoffmann	 Joon-Ho Lee	 Eun. Yoo
 Chang Huang	 Allison Martinez Kim	 Di. Zeng	 Zhifei Yu	 Mehmet H. Hoffmann
 Sajana Nimesha Cabral	 Allison Dorr	 Eun. Yoo	 Eun. Yoo	 Eun. Yoo
 Di. Zeng	 Charles Hafford	 Eun. Yoo	 Eun. Yoo	 Eun. Yoo

The Center for Architecture is closed temporarily as we continue to evaluate and update our response to COVID-19. See our [Calendar](#) for virtual programming. [Read a message on our current initiatives.](#)

Project Articles

Class of 2020

Meet the 30 new faces of the Civic Leadership Program

AIA New York 153rd Annual Meeting

October 10th
Join us Wed., June 17, 6pm

COVID-19 Resources

Our hub for architects to remain connected and operational



NEWS

5/27/20 | In the News
In the News

5/27/20 | Featured Member
Featured Member: Brendas Coburn, FAIA

5/26/20 | AIA National News
#ArchGrad20 Encourages Recent Architecture Graduates to Persist

[See All News >](#)

[Newsletter Sign-up >](#)

Follow us:



[Full Calendar >](#)

UPCOMING EVENTS

Mon, 6/15 | Continuing Education

AIA Women in Architecture Chapter Exchange

Tue, 6/23 | Partner Program

Practice, Pandemic and the Profession

Tue, 6/23 | Continuing Education

A Primer in Effective Community Engagement and Design

Thu, 6/11 | Continuing Education

Envision: A Framework for Sustainable Infrastructure



The Center for Architecture is closed temporarily as we continue to evaluate and update our response to COVID-19. See our [Calendar](#) for virtual programming. [Read a message on our current initiatives.](#)

Support Pages

Guess-A-Sketch

Join us June 18 for the virtual competition and fundraiser!

K-12 Resources

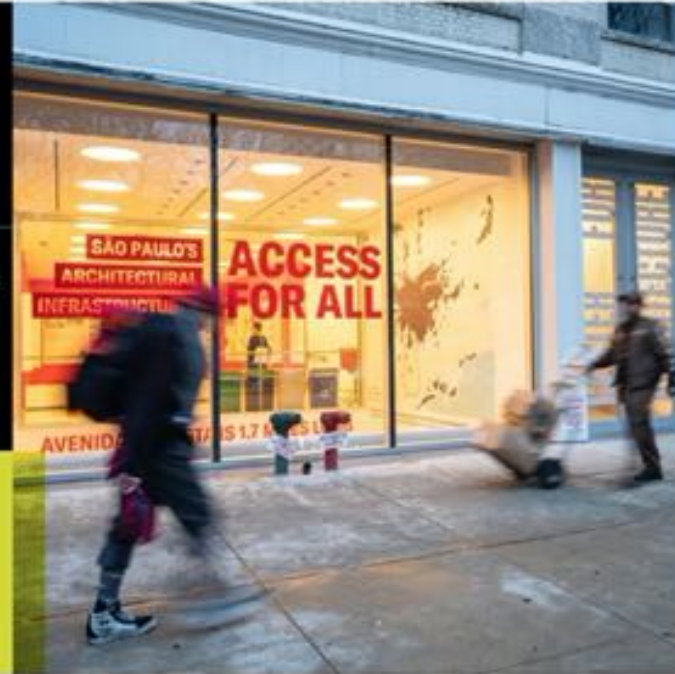
Design a Marble Maze Using Scrap Cardboard

Explore our #ArchitectureAtHome activity series

News

An Update from AIA NY and the Center for Architecture during COVID-19

AIA New York | 10h



CENTER FOR ARCHITECTURE

536 LaGuardia Place
New York, NY 10012
212-683-0029

Monday, Jun 01

Visit >

Gallery Hours

Monday - Friday: 9am - 5pm*
Saturday: 11am - 5pm*

*The Center for Architecture is closed temporarily in response to COVID-19. Join us for a webinar!

Follow us:

UPCOMING EVENTS

TALKS/LECTURES

K-12 EVENTS

[Full Calendar >](#)

Mon, 6/15 | Continuing Education

AIA Women in Architecture Chapter Exchange

Tue, 6/23 | Partner Program

Practice, Pandemic and the Profession

Tue, 6/23 | Continuing Education

A Primer in Effective Community Engagement and Design

Thu, 6/11 | Continuing Education

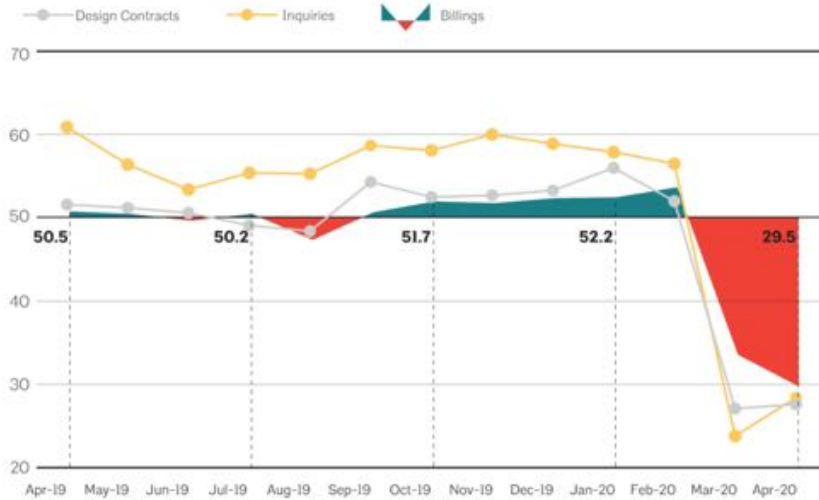
Envision: A Framework for Sustainable Infrastructure



National

Architecture firm billings decline even further in April

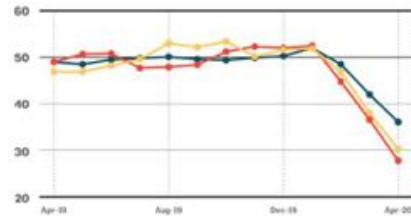
Graphs represent data from April 2019–April 2020.



Sector

Firms with Commercial/Industrial specialization remain hardest hit

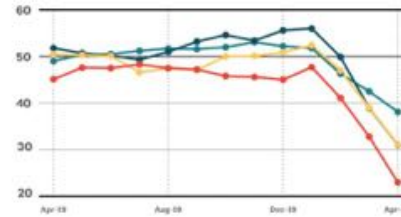
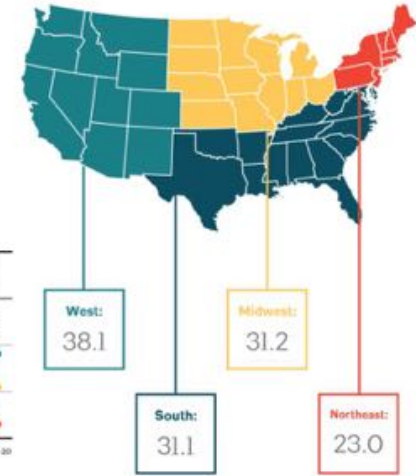
Graphs represent data from April 2019–April 2020 across the three sectors. 50 represents the diffusion center. A score of 50 equals no change from the previous month. Above 50 shows increase; Below 50 shows decrease. 3-month moving average.



Regional

Business conditions soften dramatically at firms located in the Northeast

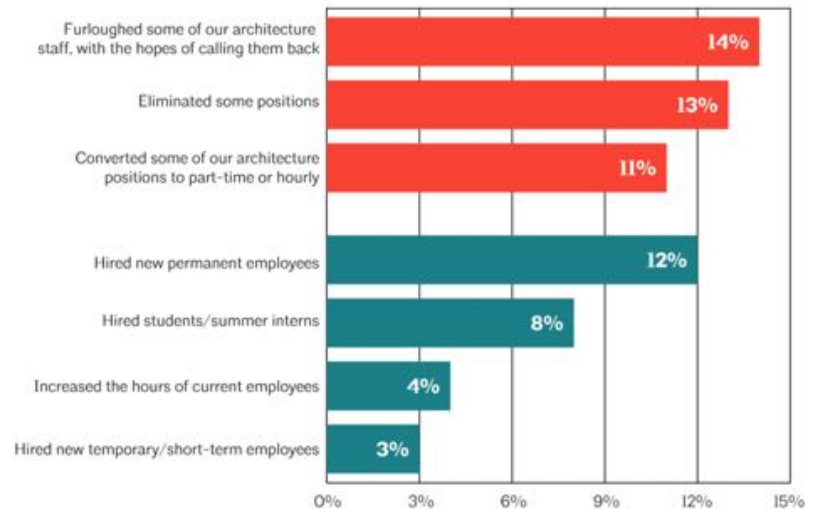
Graphs represent data from April 2019–April 2020 across the four regions. 50 represents the diffusion center. A score of 50 equals no change from the previous month. Above 50 shows increase; Below 50 shows decrease. 3-month moving average.



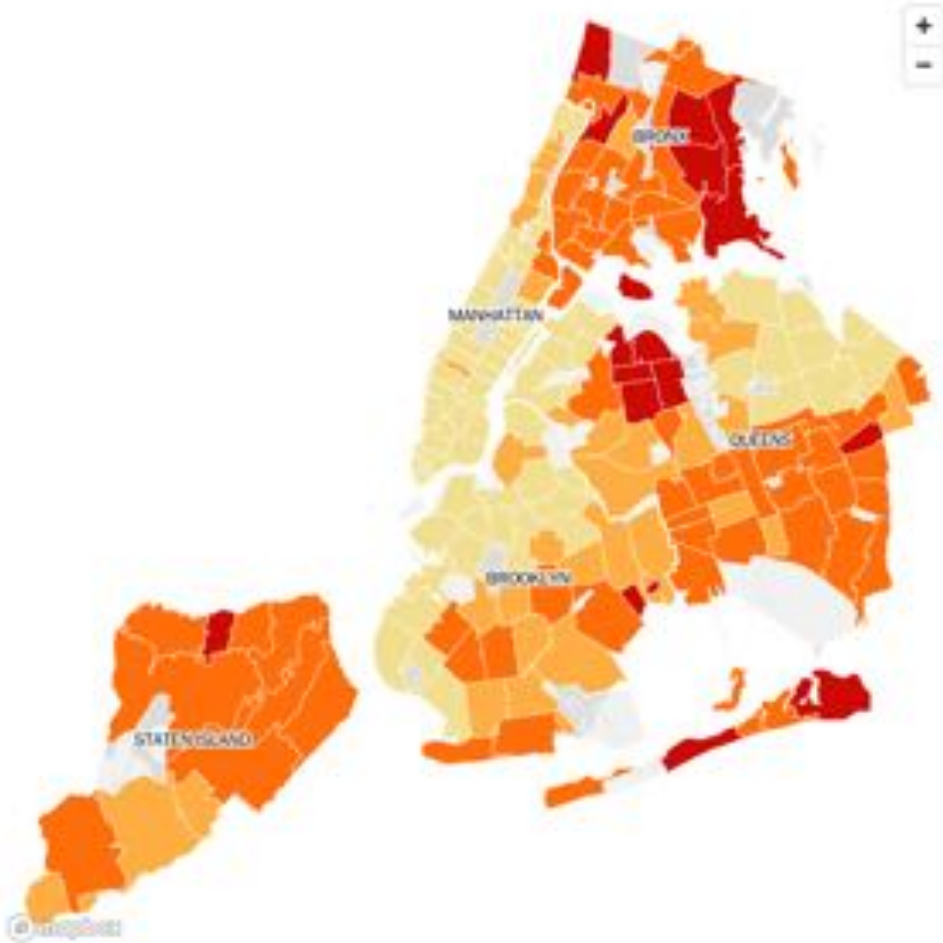
Practice

While some firms have furloughed staff or eliminated positions since the pandemic began, others have hired new employees

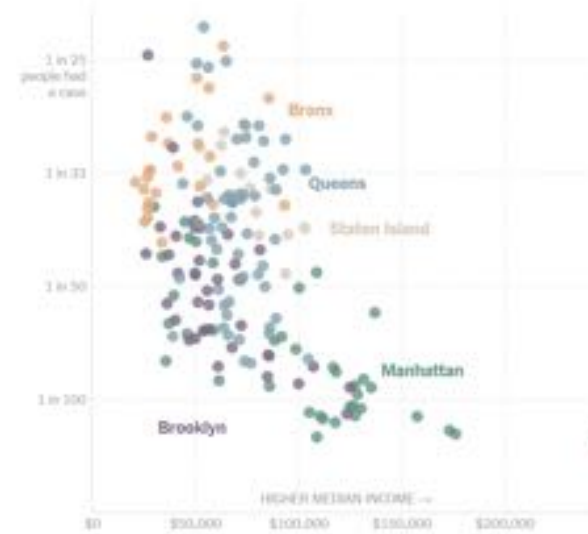
units: % of firms that have taken the given action regarding architecture staff since the outbreak of the COVID-19 pandemic, multiple responses permitted



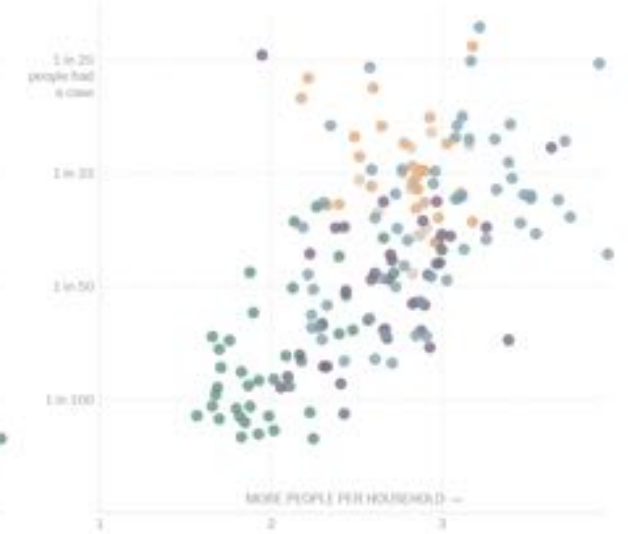
Cases in New York City



The outbreak is worse in areas with lower incomes ...



... and more people living together.



Source: New York City Department of Health and Mental Hygiene. Note: The map shows the known locations of coronavirus cases by ZIP code. For total cases, circles are sized by the number of people there who have tested positive for the virus, which may differ from where they contracted the illness.



