

NYC Health + Hospitals

*COVID-19 Impact on NYC Health and Hospitals
Corporation Projects and Priorities*



Continuing Education Credit

A credit value is assigned to CMAA courses and seminars in units of Professional Development Hours (PDH), Learning Units (LU), and CCM Recertification Points. CMAA guarantees that course material meets the minimum requirements for a PDH, which is 60 minutes of instruction, or increments thereof.



All courses approved by CMAA count toward CCM recertification points. For more information on recertification points.

<https://recerttrack.com/home.php?portal=24>



CMAA is registered with the American Institute of Architects (AIA) as an approved CES provider of LUs. One educational contact hour equals one (1) LU. To receive LUs through CMAA, you must provide your AIA member number on all registration materials and attendance forms.

www.aia.com



CMAA has met the standards and requirements of the Registered Continuing Education Program. Credit earned on completion of this program will be reported to RCEP. A certificate of completion will be issued to each participant. As such, it does not include content that may be deemed or construed to be an approval or endorsement by RCEP.

www.rcep.net

Not all sessions and activities offered may be acceptable for continuing education credit in your state. Please check your state licensing board's requirements before submitting your credits.



CONSTRUCTION MANAGEMENT ASSOCIATION OF AMERICA
METRO NEW YORK / NEW JERSEY CHAPTER

Learning Objectives

1

Describe the purpose, services and facilities of the NYC Health + Hospitals, the largest public health care system in the United States, providing essential inpatient, outpatient, and home-based services to more than one million New Yorkers every year in more than 70 locations across the city's five boroughs.

2

Discuss H+H's system-wide facility response to support COVID-19 care at HHC's eleven acute care hospitals along with five post-acute/long-term care facilities.

3

Identify the way in which the new needs arising from the COVID-19 pandemic in New York has caused changes in operations, layout, equipment, and approach in HHC's facilities.

4

Explain the design and construction considerations to be able to provide on-demand, walk-in COVID-19 antibody testing at HHC's eleven acute care hospitals, ten community testing clinics, and more than 25 new pop-up sites across all boroughs.



Who we are



11 Hospitals



6 Diagnostic
& Treatment
Centers



50+
Community
Health Centers



5 Long-Term
Care Facilities



Home Health
Agency



Health Plan



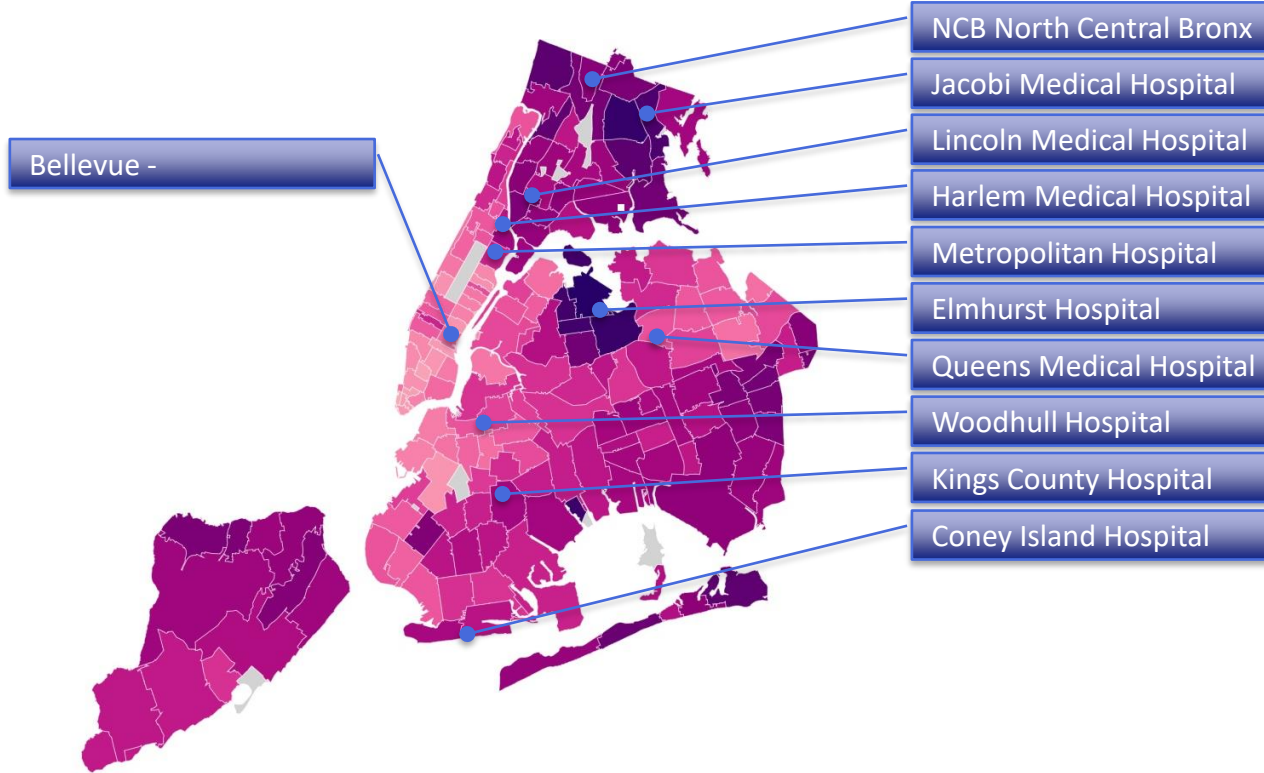
Guaranteed
Healthcare

NYC Health + Hospitals is the largest public health care system in the nation serving more than a million New Yorkers annually in more than 70 patient care locations across the city's five boroughs. A robust network of outpatient, neighborhood-based primary and specialty care centers anchors care coordination with the system's trauma centers, nursing homes, post-acute care centers, home care agency, and MetroPlus health plan—all supported by 11 essential hospitals. Its diverse workforce of more than 42,000 employees is uniquely focused on empowering New Yorkers, without exception, to live the healthiest life possible.



Acute Care Hospitals

Case Rate per 100k
634 4,504



Office of Facilities Development (OFD)



Facility Management



Planning, Design & Construction



Technical Support Services



Real Estate & Housing

Our Purpose

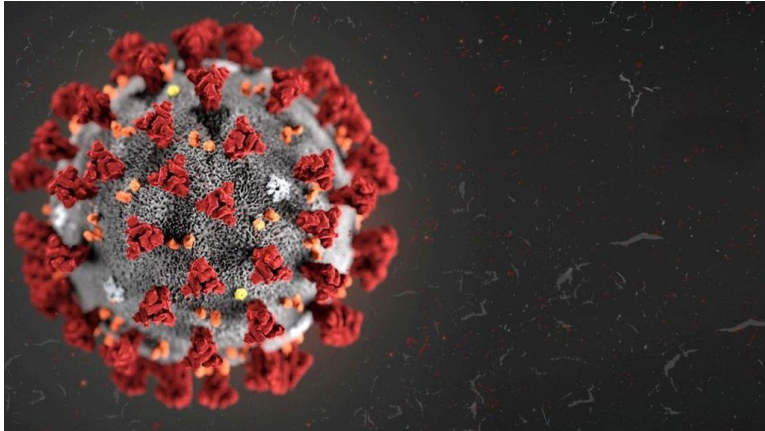
The Office of Facilities Development (OFD) is responsible for the capital development, real estate optimization and facility management of all of NYC Health + Hospitals' leased and owned assets across the City of New York.

Our team is a value added partner for our clinical leaders and facility-based clients to facilitate and planning, design, construction and facility management efficiently and safely for the best environment for our patients and staff.

During emergency activation, OFD leads Facility Logistics within the Incident Command Structure.



H+H Facility Response to Covid19



Areas of Focus Throughout COVID-19 Pandemic

Space
Inventory &
Surge
Planning

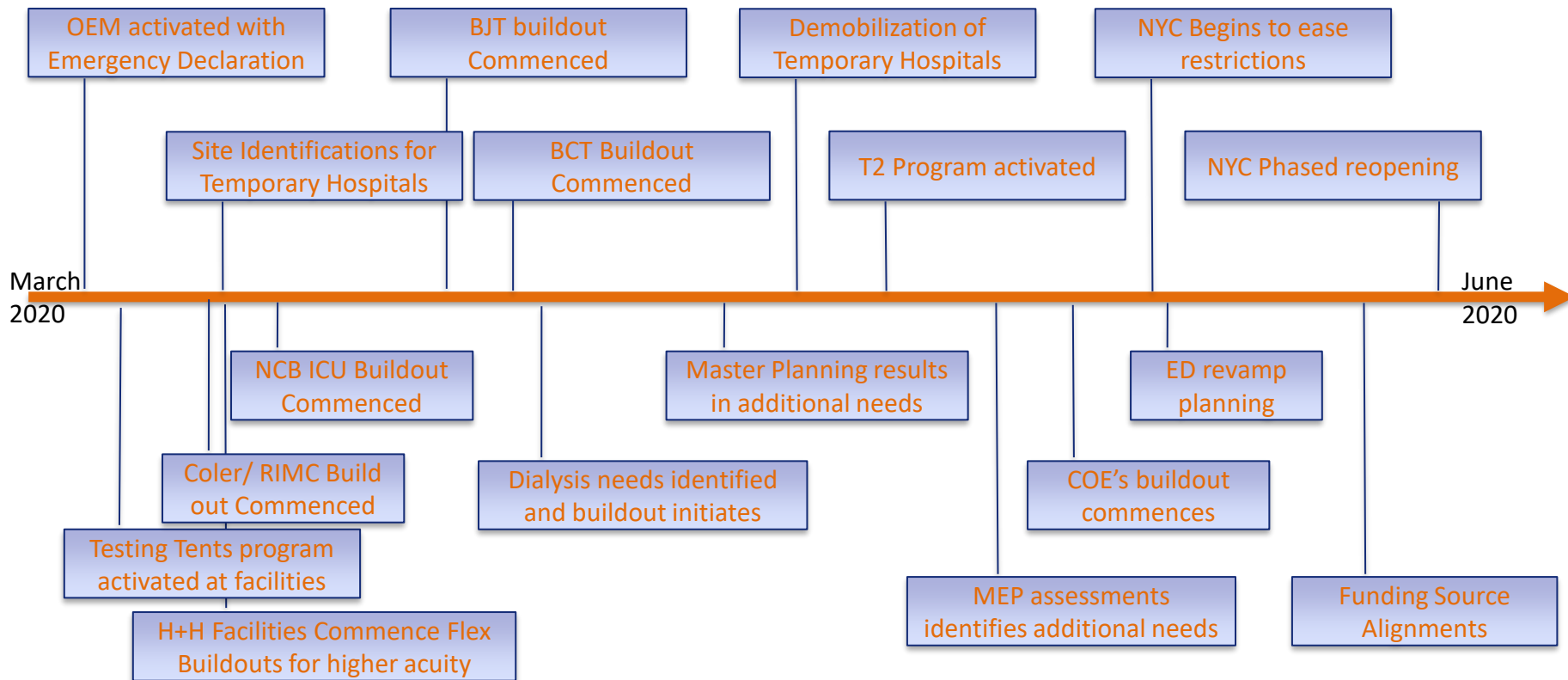
Increase ICU
bed/COVID-
19 Care
Capacity &
Maintain
Hospital
Operations

Build New
Bed
Capacity

Build
Temporary
Tent
Structures

Build
Alternative
Care Surge
Sites

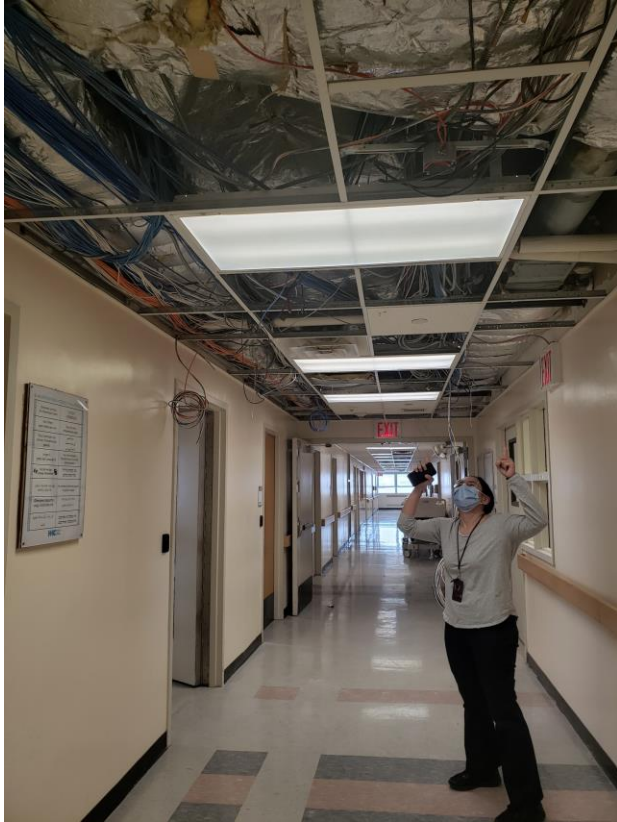
COVID-19 Highlights



Facility Accomplishments



NYC HEALTH+ HOSPITALS 24/7 Surge Construction



Project kickoff 3/19



April 8th



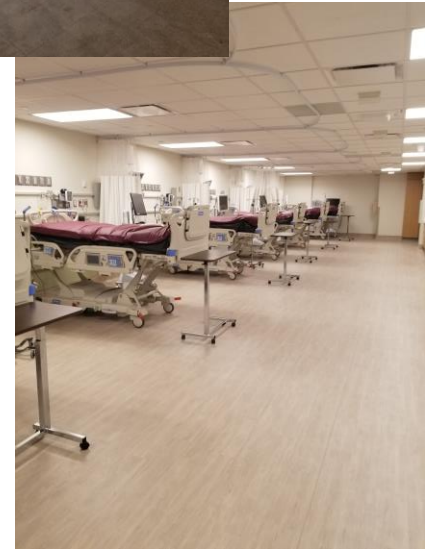
April 16th



April 21st

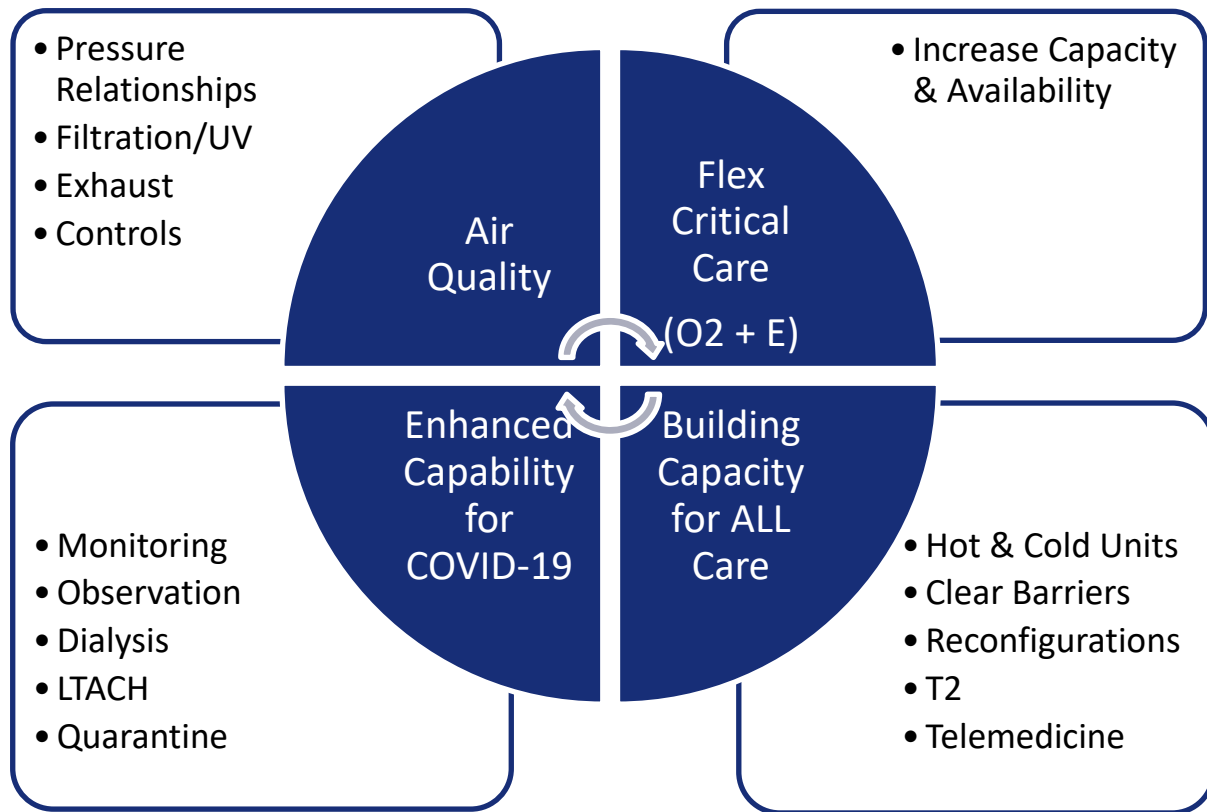


April 28th



June 2nd

Second Surge COVID-19 Planning



T2 Testing

- Collaborative effort with City Hall, DCAS, SCA, DDC and H+H
 - City Hall/DCAS identifies space and provides support services
 - SCA + DDC build out space
 - H+H provides guidance for build out and operates space
- 27 new sites operationalized since 5/15
- 4 mobile units deployed
- Approximately 12,000 test a day currently

Highgate Testing Site



Long Term Impacts of COVID-19

- Creating “cold” and “hot” patient pathways
- Creating as much flexible use space within hospitals and communities
- PPE supply chain
- HVAC management
- Maintaining, augmenting, and stretching the hospital workforce
- Growth in just in time inventory and space management

Q & A

